

The Bachman - Wilson House

by Frank Lloyd Wright

PROJECT 03: ANALYTIQUE

Materials Methods Meaning 23/FA-INT-326-06

Defne Gunel

PHASE 0: Selection, Research, and Formulation of a Hypothesis

The Bachman-Wilson House by Frank Lloyd Wright at Crystal Bridges Museum in Bentonville, Arkansas.

Exterior of The Bachman-Wilson House



<https://www.news-leader.com/story/life/home-garden/2015/10/14/frank-lloyd-wright-house-crystal-bridges-home/73806934/>

Large living Room (left is the entrance + hallway)
(Right is leading to the kitchen)



https://www.researchgate.net/figure/1954-Bachman-House-living-space-by-Frank-Lloyd-Wright_fig1_330510250

Details



Living Room



<https://inhabitat.com/iconic-frank-lloyd-wright-home-may-be-moved-from-new-jersey-to-italy-to-protect-it-from-flood-damage/bachman-wilson-house-flw7/>

Kitchen



<https://crystalbridges.org/architecture/frank-lloyd-wright-bachman-wilson-house/>

Bathroom



Bedroom (2nd Floor)



<https://crystalbridges.org/architecture/frank-lloyd-wright-bachman-wilson-house/>

RESEARCH



SketchUp youtube video:

[Bachman-Wilson House - Frank Lloyd Wright - SketchUp](https://www.youtube.com/watch?v=7frank-lloyd-wright-bachman-wilson-house)

Landscape before transportation from New Jersey to Arkansas.

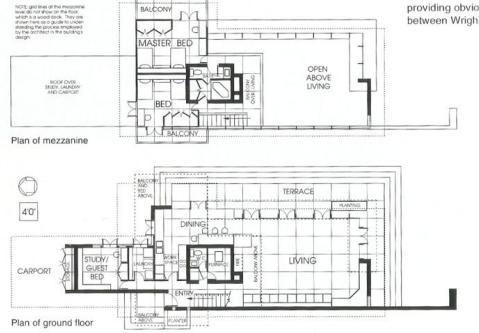


Millstone River

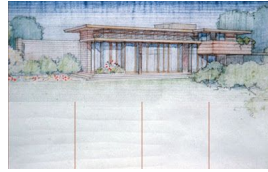
Location after being transported to Bentonville, Arkansas.

<https://crystalbridges.org/architecture/frank-lloyd-wright-bachman-wilson-house/>

1st floor & 2nd floor plan



<https://tulsatinystuff.blogspot.com/2015/07/frank-lloyd-wright-bachman-wilson.html>



The Bachman-Wilson house was designed and built for Gloria Bachman and Abraham Wilson in 1956 near the Millstone River in New Jersey. The house was transported to Northwest Arkansas (Crystal Bridges Museum) in 2013 due to it's floating in Jersey. The Bachman-Wilson house was reconstructed in 2015. While the reconstruction new concrete blocks, a safety glass, and a new slab were added. Although the houses most famous and important feature stayed the same, **mahogany beams**. Also most of the wood furnishings has stayed the same. The landscape while transporting the house was taken in consideration and where the house is placed is similar to the original. People even planted native fauna trees to make the environment similar to New Jersey.

The Bachman-Wilson house is simple and lower cost but has quality. Like Frank Lloyd Wright's other designs this design was aswell considered Usonian Architecture which in Frank Lloyd Wright's words means american style of residential architecture. Usonian house characteristics are having dominant horizontal lines, flat roofs with large overhangs and standarized materials. In this case the Bachman-Wilson house is a combination of mainly; **mahogany wood**, concrete and glass. The house has a distinct mid-century modern design. The large living room is the heart of the house. The living room is faced outside.

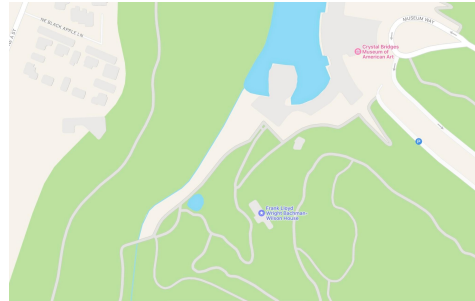
NARRATIVE

"I'd like to have a free architecture," Wright wrote. "I'd like to have architecture that belonged where you see it standing and was a grace to the landscape instead of a disgrace."

Dautrich, C. (2015a, October 14). *Home of the week: Frank Lloyd Wright's Bachman-Wilson House*. Leader.

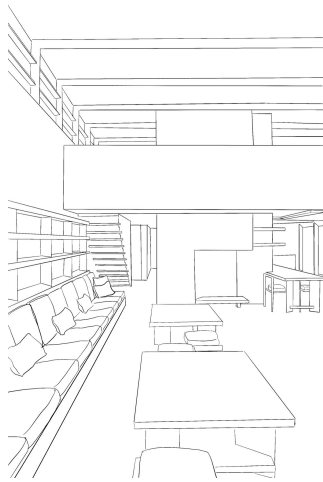
<https://www.news-leader.com/story/life/home-garden/2015/10/14/frank-lloyd-wright-house-crystal-bridges-home/73806934/>

The Bachman-Wilson House, designed by Frank Lloyd Wright, abstracts the harmony between nature and architecture through its specific use of carved mahogany wood in the window design of the space, embodying Wright's Usonian vision of affordable, and quality American architecture.

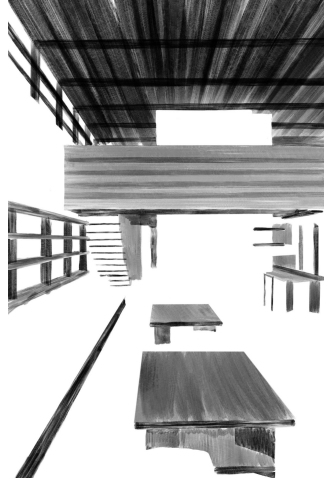


PHASE 1: Map the Narrative (Interior)

Interior Sketch



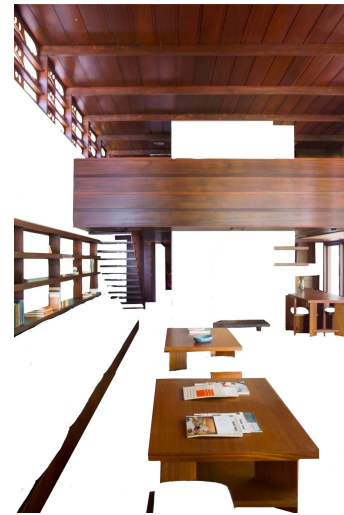
Line and Plane



Scale



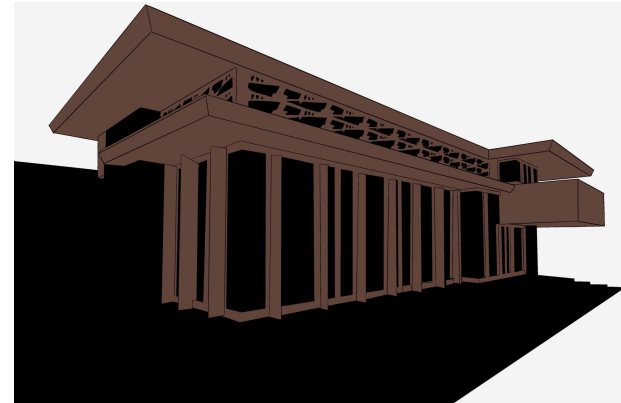
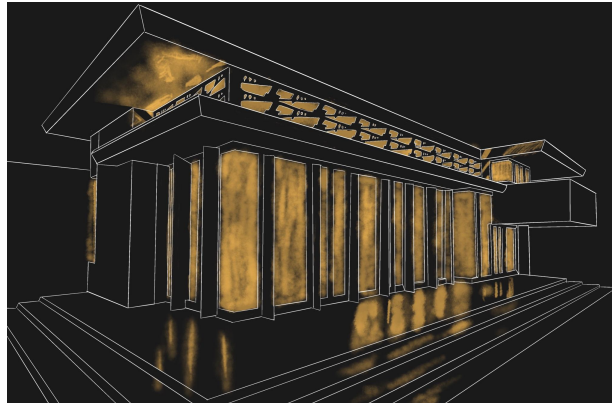
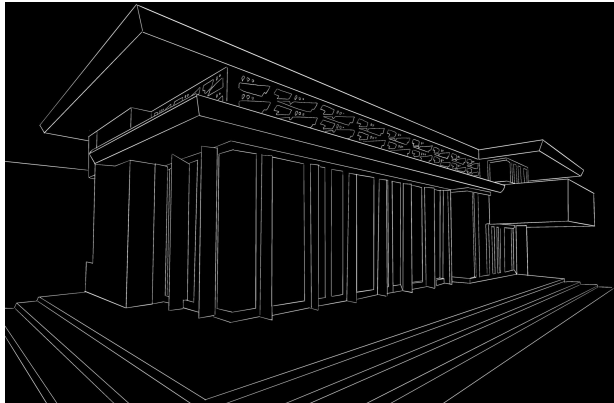
Mahogany wood vs. other materials



Exterior Sketch

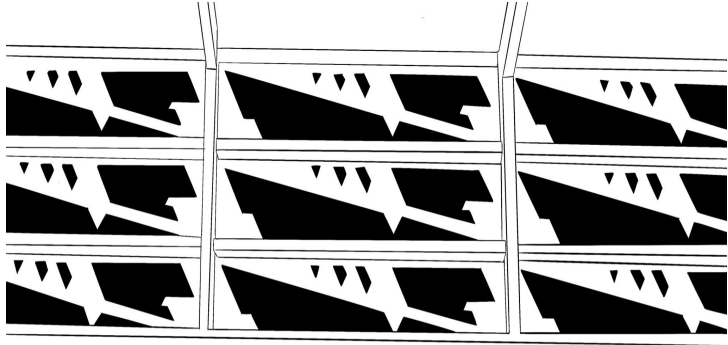
Artificial Light Diagram

Mahogany wood vs. other materials



PHASE 1: Map the Narrative

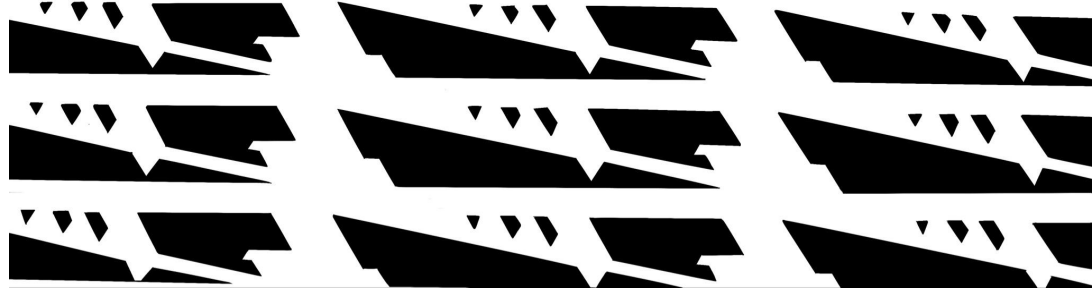
Interior vs. Exterior



Mahogany Wood



Geometry

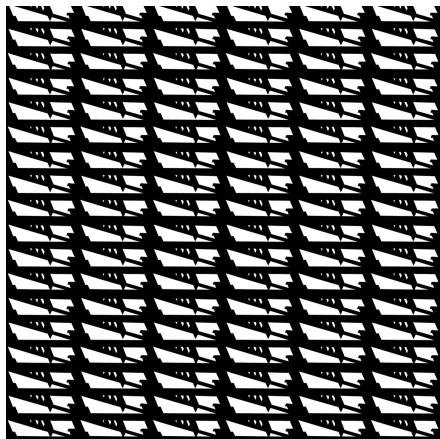


Light vs. Shadow

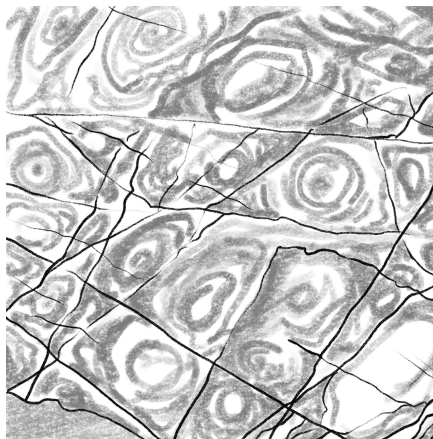


PHASE 1: Map the Narrative - Harmony to Natural Patterns and Textures

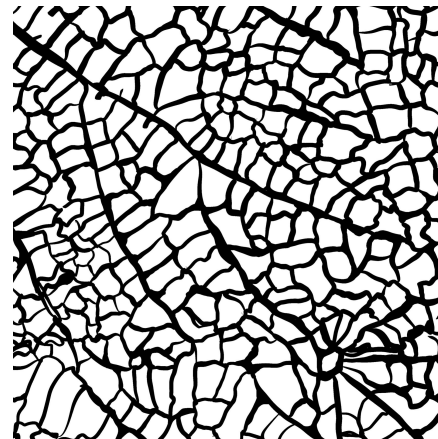
Mahogany carvings as pattern



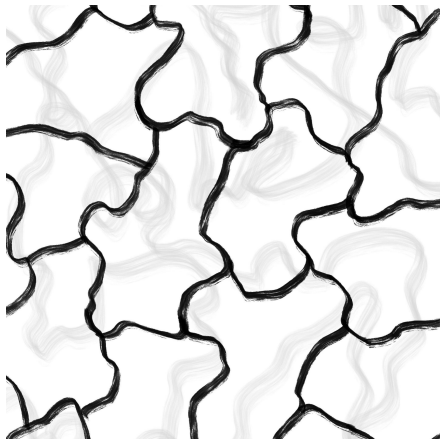
Stone Formation Geometry



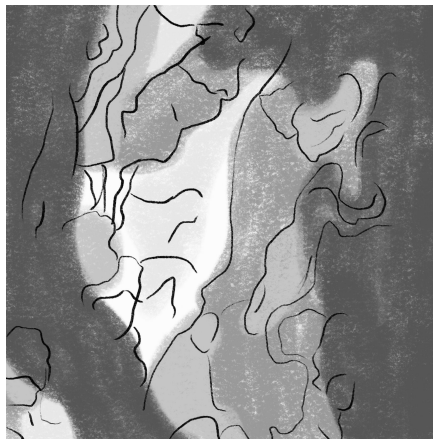
Leaf Vein Pattern



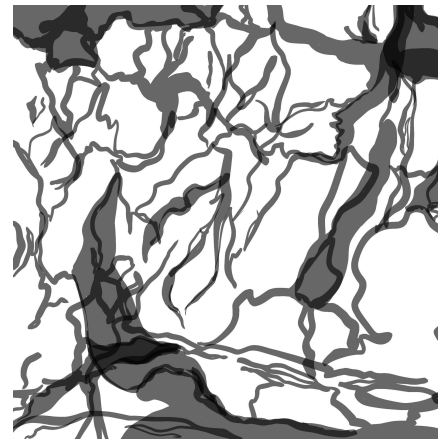
Flower Petal Detail



Tree Bark Texture



Water Ripples



**Mahogany Wood
Texture**



PHASE 2: Identify the Assembly

Mahogany Wood - Tree Tropical hardwood species of the genus *Swietenia*. Reddish brown, straight grained, indigenous to the Americas

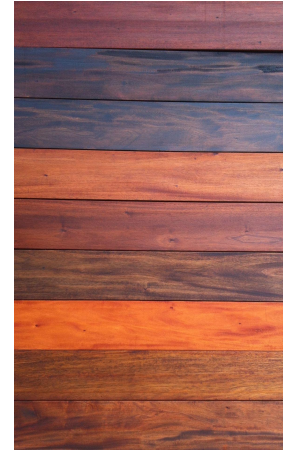
Harvesting Mahogany - Logging - Milling
- Grading - Carving - Processing -
Finishing

Mahogany Tree

Different textures and colors of mahogany wood



The Bachman - Wilson house being transported to Arkansas and being reconstructed



Different stains on Genuine Mahogany



Clerestory window features



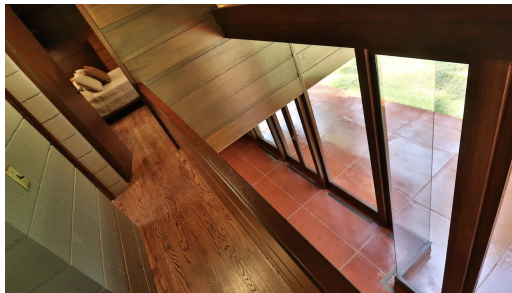
Seed Pod Design



Wood carvings in a samara

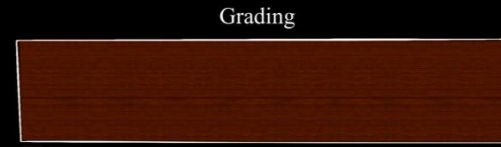
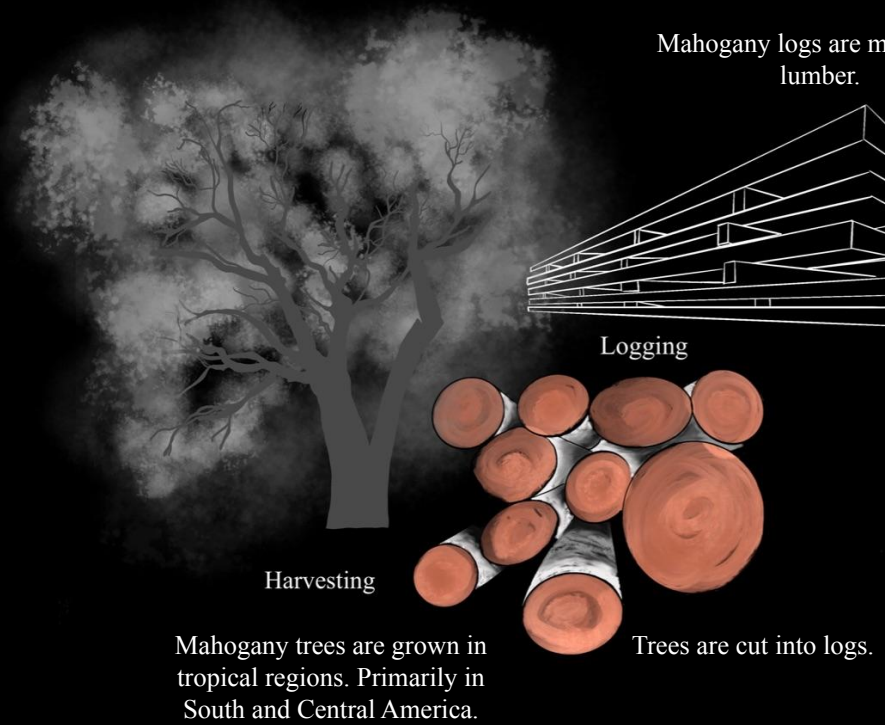


<https://www.news-leader.com/story/life/home-garden/2015/10/14/frank-lloyd-wright-house-crystal-bridge-home/73806934/>

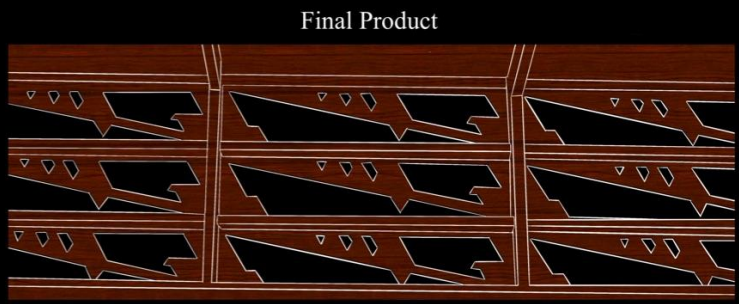


PROCESS

Milled Mahogany Lumber is graded based on its quality and appearance.

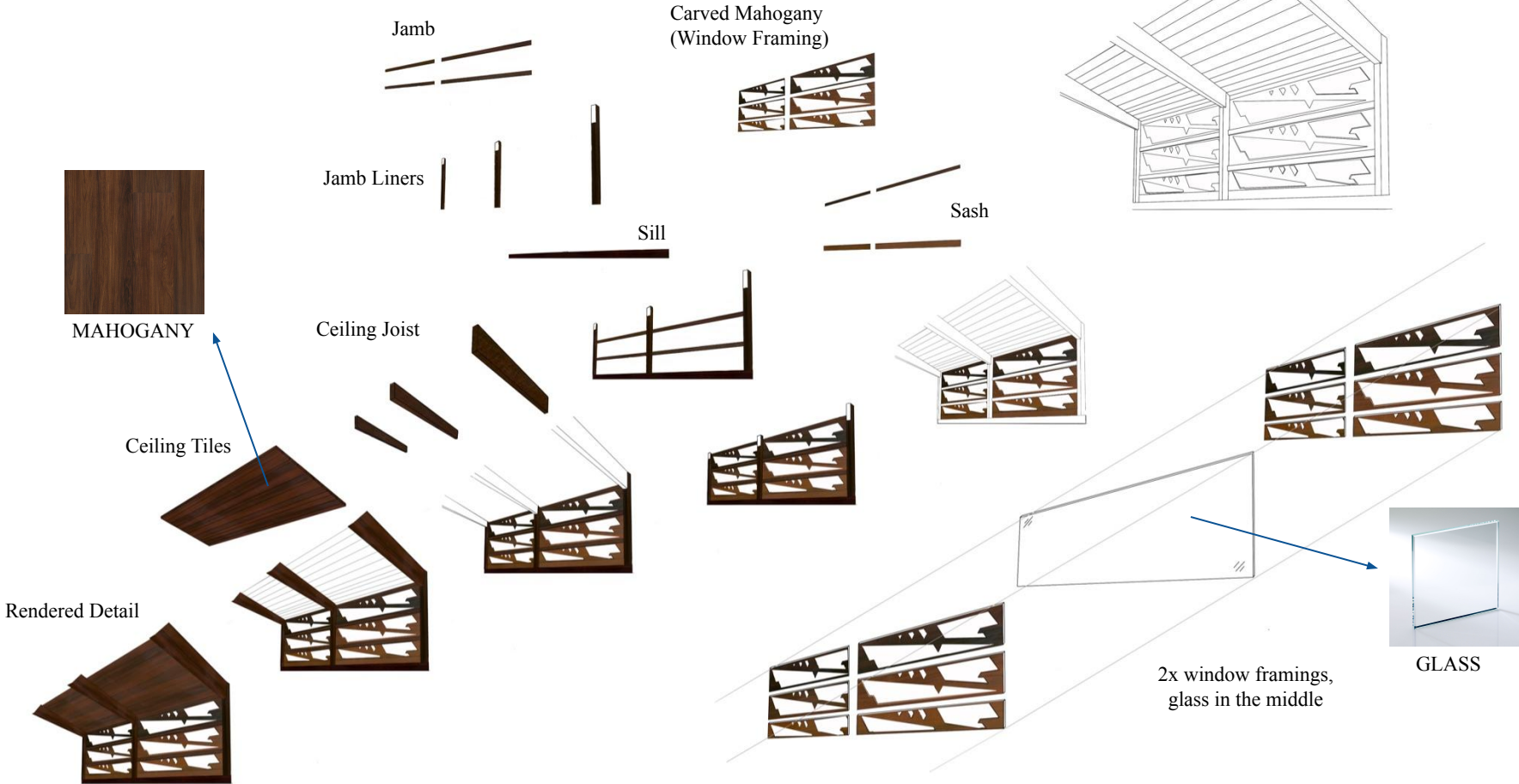


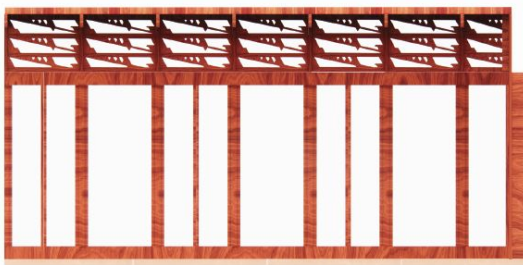
The graded wood is hand carved to the shape that is wanted.



Mahogany wood is finished with clear coats at last. This process protects the wood from moisture and wear. Finishing enhances the woods appearance.

MATERIAL ASSEMBLY



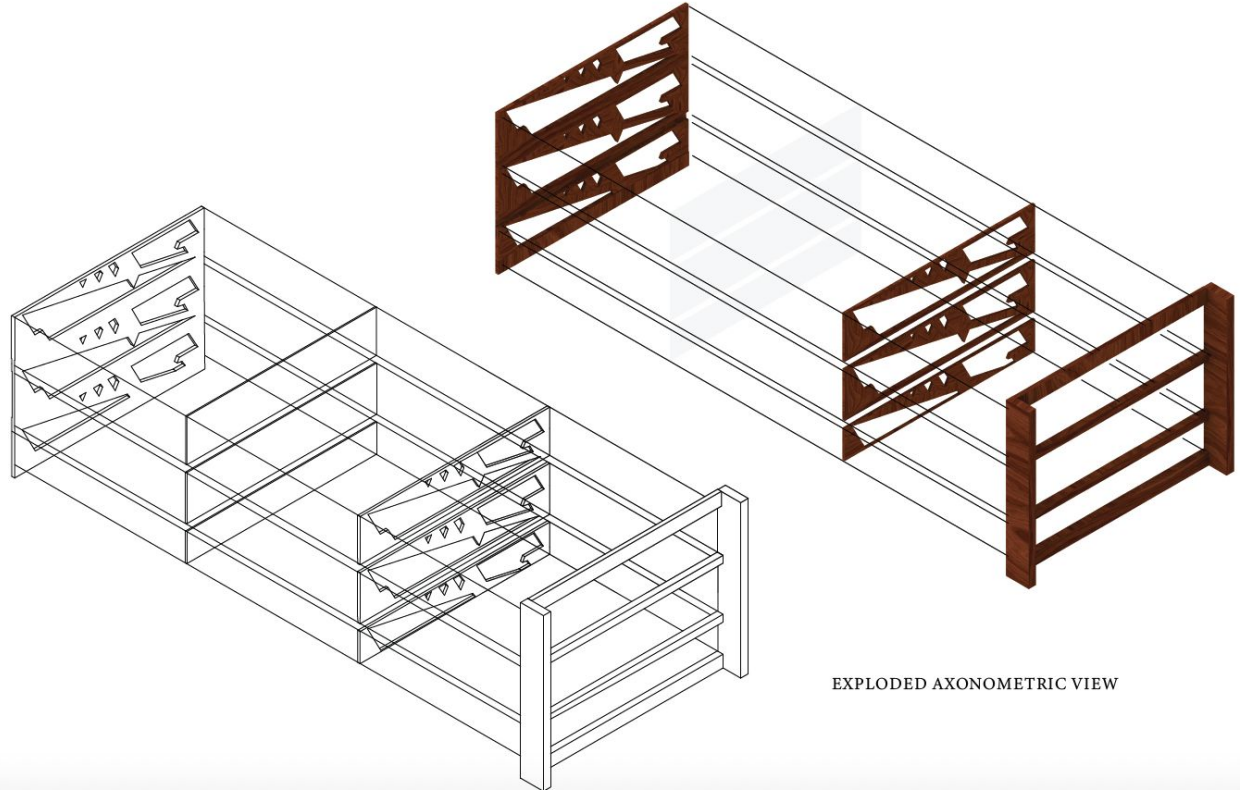


S1

RENDERINGS



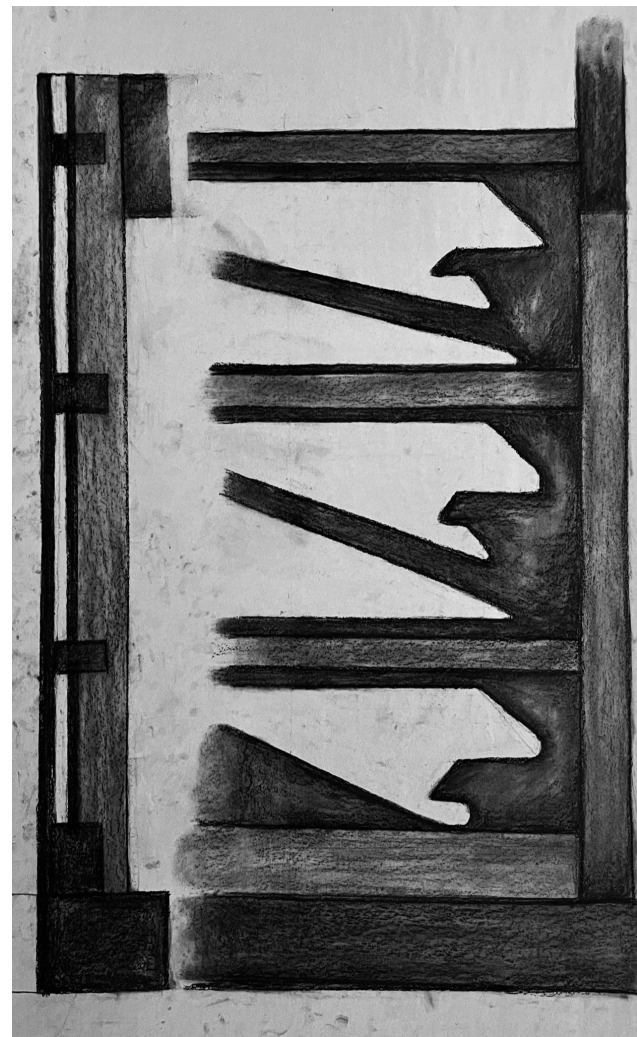
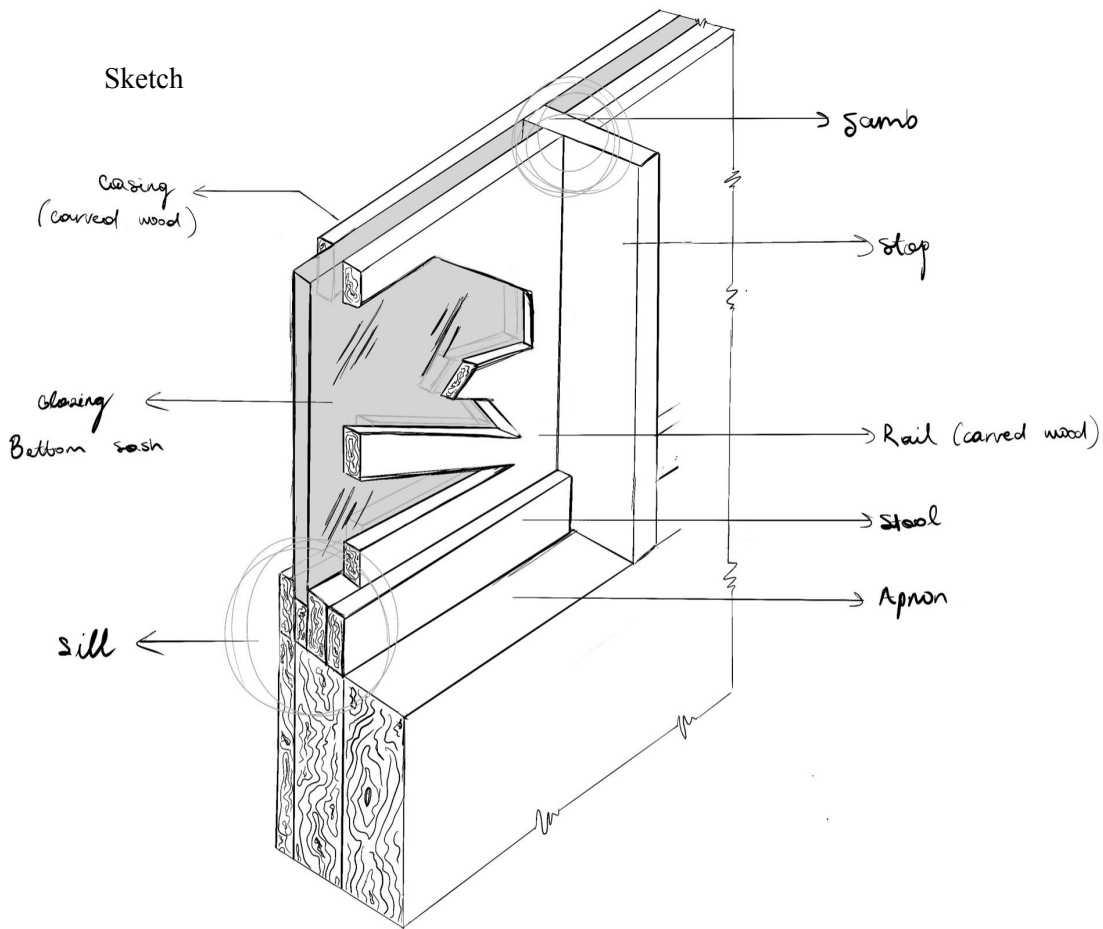
S2



EXPLODED AXONOMETRIC VIEW

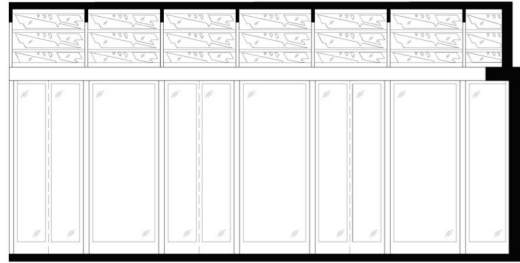
PHASE 3: Detail Narrative

Full Scale Drawing

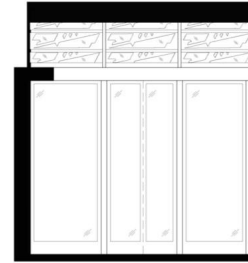


SECTIONS

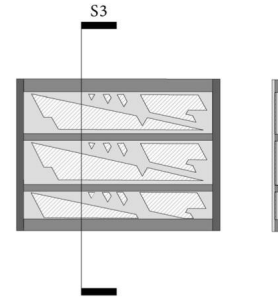
PHASE 04:
Situating the detail
in your space



S1

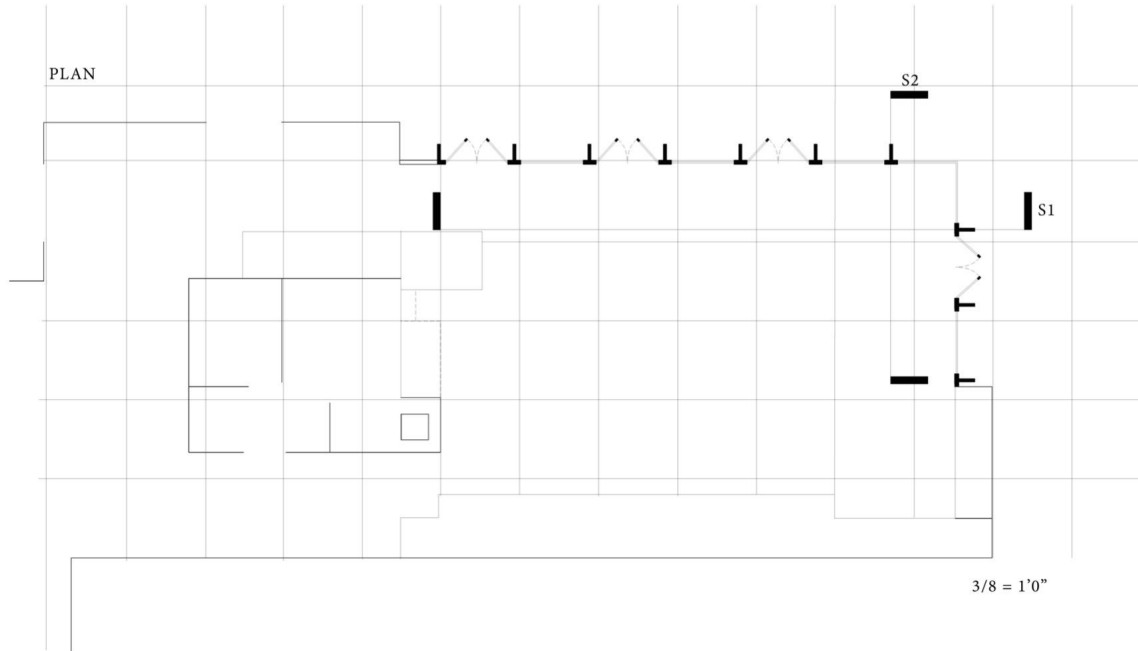


S2



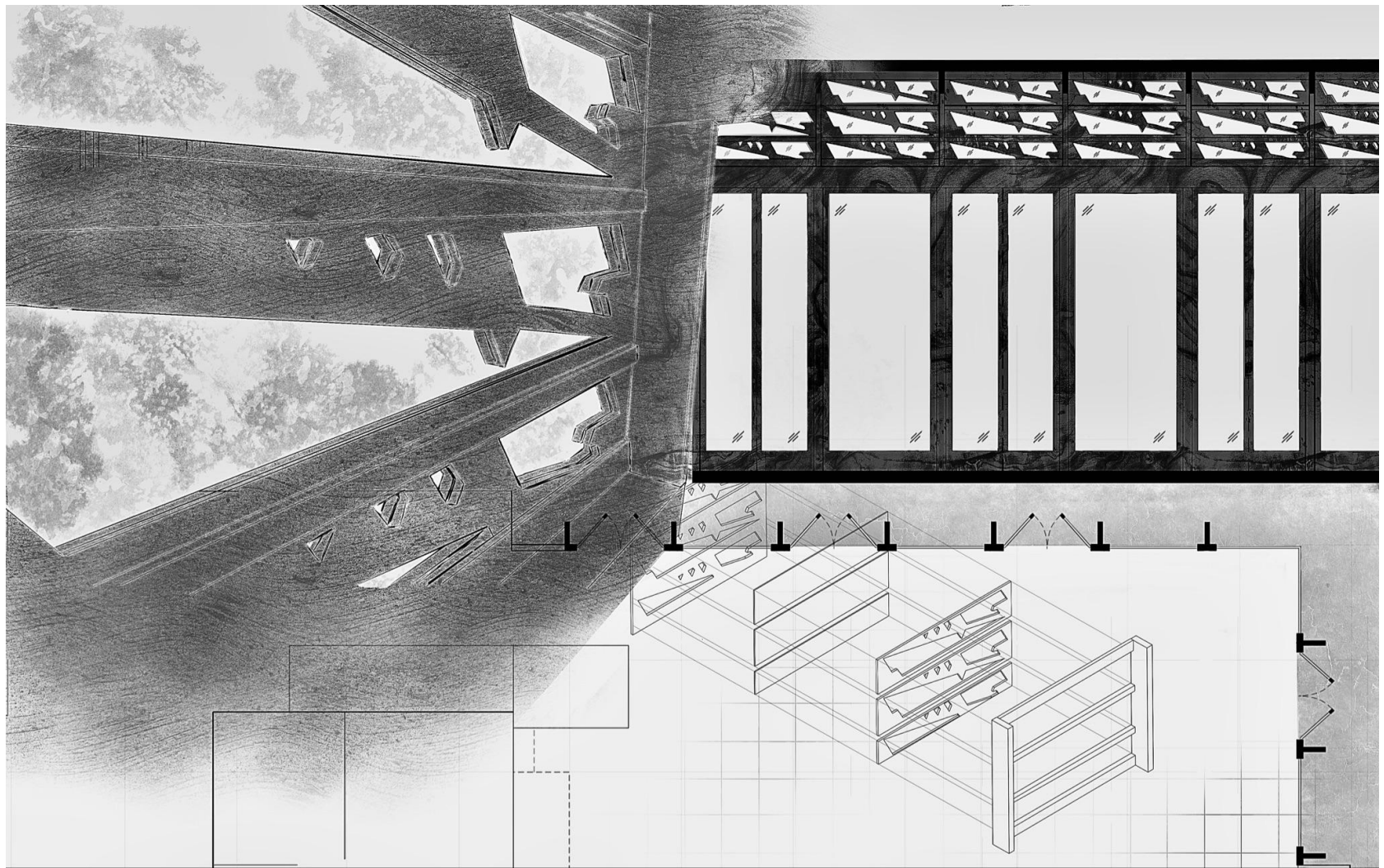
S3

Process



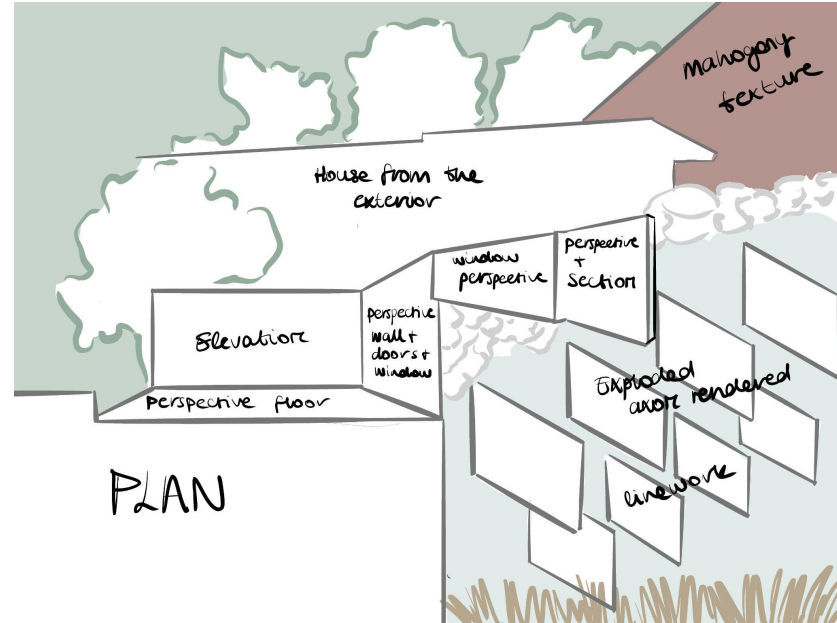
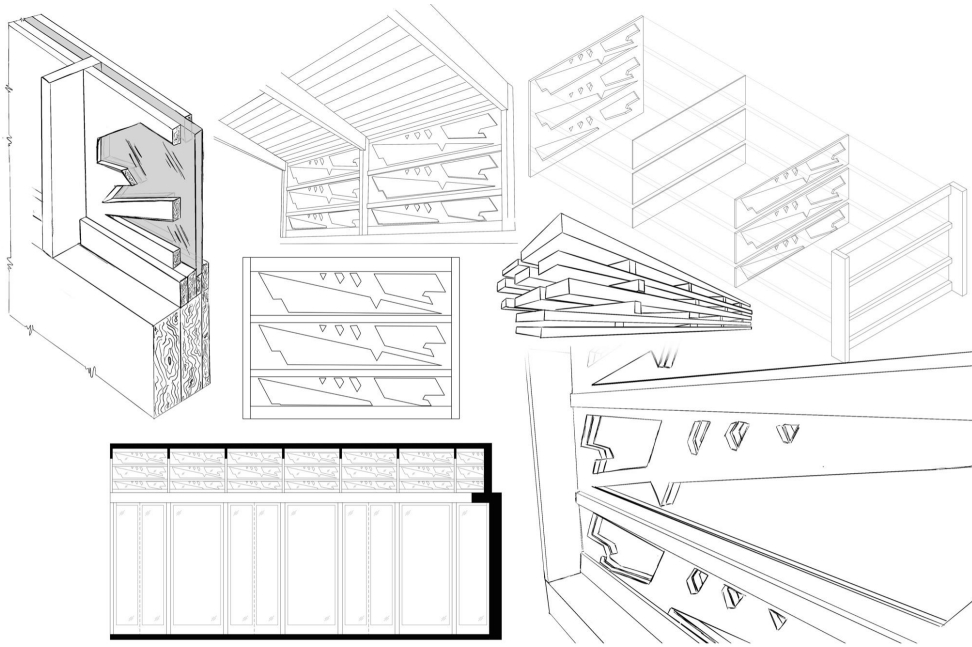
PLAN

3/8" = 1'0"



PHASE 05: Explore & Test The Narrative

PROCESS



PHASE 6: Revise & Reassemble / Written Statement

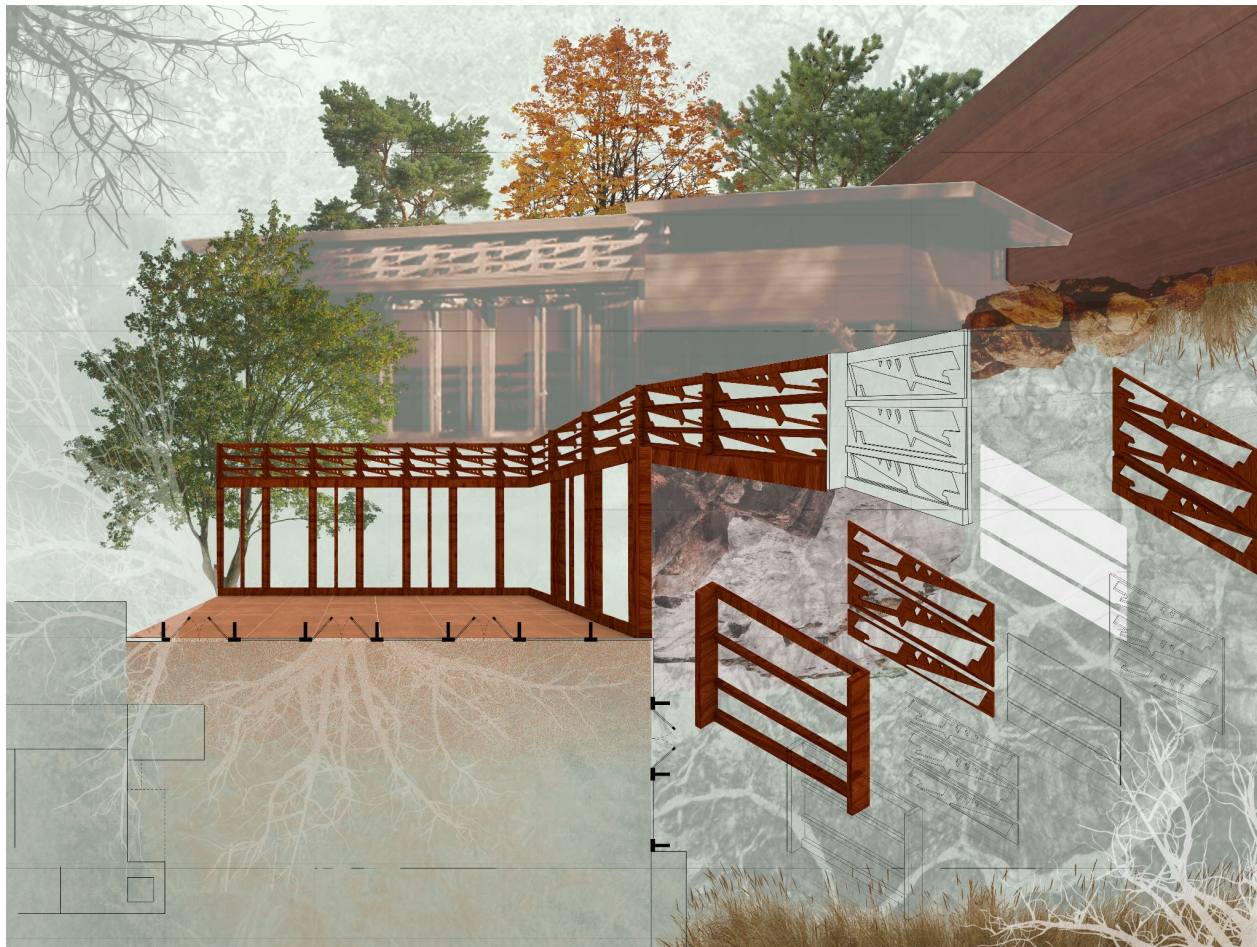
The core of my analysis focused on the mahogany wood in Frank Lloyd Wright's Bachman-Wilson house, concentrating on the intrinsic value and impact of this material. This research is an exploration of how materials can change the function, form and sensuality of a place. Wright's philosophy of designing spaces in harmony with their surroundings is evidenced in the Bachman-Wilson house, where mahogany is not only used structurally but is also used to design the house in harmony with its natural surroundings.

The analysis I made by researching organic forms in nature such as water waves, and the texture change of stones over time, and such, I developed a deep understanding of how these natural elements can affect architecture and design. As a result of this research, I understood how the texture and color of the mahogany material used in the Bachman - Wilson house establishes the connection between nature.

Wright's approach to the Bachman-Wilson house design was based on Usonian principles; functionality, economy, and American style. The use of concrete, mahogany, and glass in the house's foundations was not arbitrary. From the transparency of glass to the durability of concrete, every material has a purpose: to create a connection between the nature surrounding.. The house becomes a complete whole considering the mahogany tree that complements the warmth and beauty of the Bachman-Wilson house.

In conclusion, Bachman - Wilson House is not only an impressive building, but also a working example of how spaces can connect to nature and how this can be applied to spaces by using materials such as mahogany wood. This architectural design by Frank Lloyd Wright plays a vital role in understanding the deep connection between meaning, impact, and materiality in architecture.

PHASE 7: Final Development



BACHMAN-WILSON HOUSE

BY FRANK LLOYD WRIGHT

DEFNE GÜNEL

The Bachman-Wilson House, designed by Frank Lloyd Wright, abstracts the harmony between nature and architecture through its specific use of carved mahogany wood in the window design of the space, embodying Wright's Usonian vision of affordable, and quality American architecture.

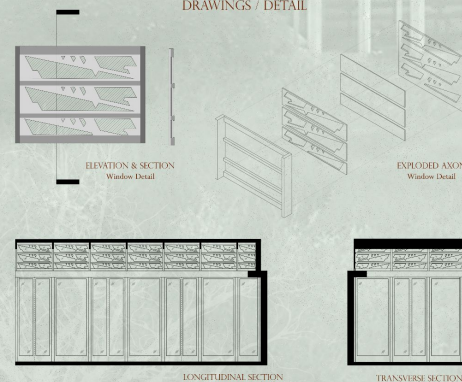
The core of my analysis focused on the mahogany wood in Frank Lloyd Wright's Bachman-Wilson house, concentrating on the intrinsic value and impact of this material. This research is an exploration of how materials can change the function, form and sensuality of a place. Wright's philosophy of designing spaces in harmony with their surroundings is evidenced in the Bachman-Wilson house, where mahogany is not only used structurally but is also used to design the house in harmony with its natural surroundings.

The analysis I made by researching organic forms in nature such as water waves, and the texture change of stones over time, and such, I developed a deep understanding of how these natural elements can affect architecture and design. As a result of this research, I understood how the texture and color of the mahogany material used in the Bachman-Wilson house establishes the connection between nature.

Wright's approach to the Bachman-Wilson house design was based on Usonian principles; functionality, economy, and American style. The use of concrete, mahogany, and glass in the house's foundations was not arbitrary. From the transparency of glass to the durability of concrete, every material has a purpose: to create a connection between the nature surrounding. The house becomes a complete whole considering the mahogany tree that complements the warmth and beauty of the Bachman-Wilson house.

In conclusion, Bachman-Wilson House is not only an impressive building, but also a working example of how spaces can connect to nature and how this can be applied to spaces by using materials such as mahogany wood. This architectural design by Frank Lloyd Wright plays a vital role in understanding the deep connection between meaning, impact, and materiality in architecture.

DRAWINGS / DETAIL



ELEVATION & SECTION
Window Detail

EXPLODED AXON
Window Detail

LONGITUDINAL SECTION

TRANSVERSE SECTION