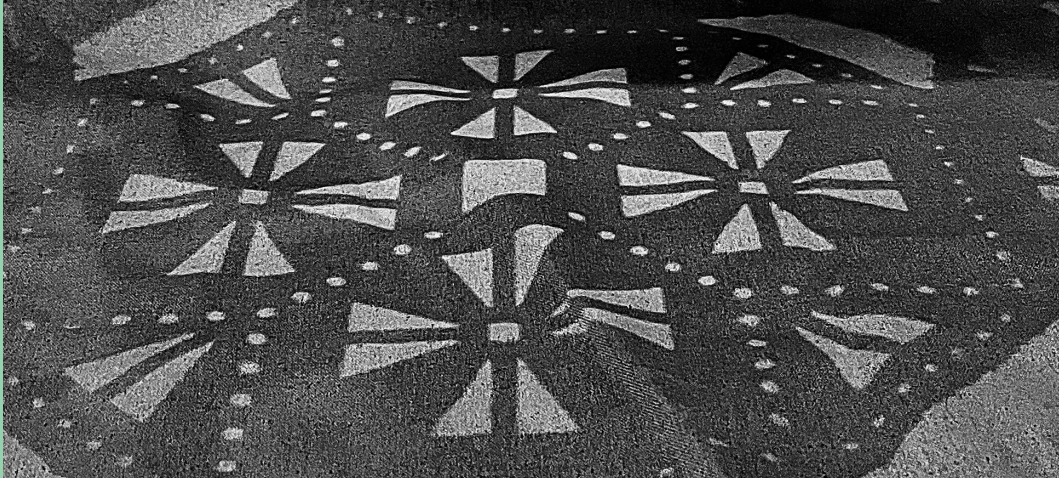


# BOOK

PROCESS



INT-325-01

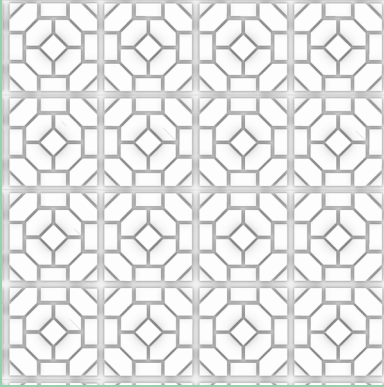
EMERGENT PLATFORMS

FALL 2023

DEFNE GUNEL

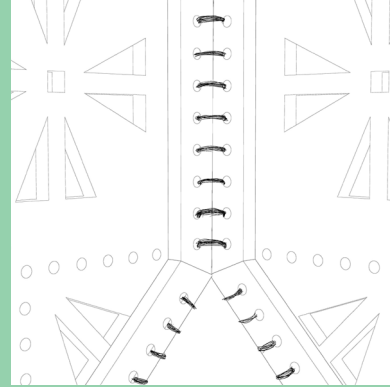
# TABLE OF CONTENTS

.01



CNC MILLING

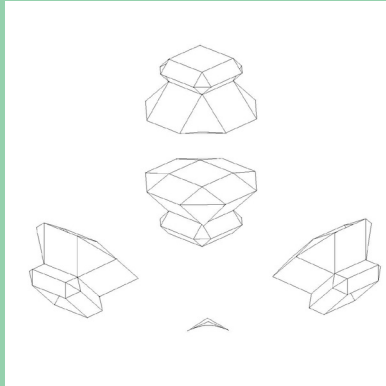
.02



LASER CUTTING

SKIN + BONES

.03



3D PRINTING

.04



MATERIALS ASSEMBLY

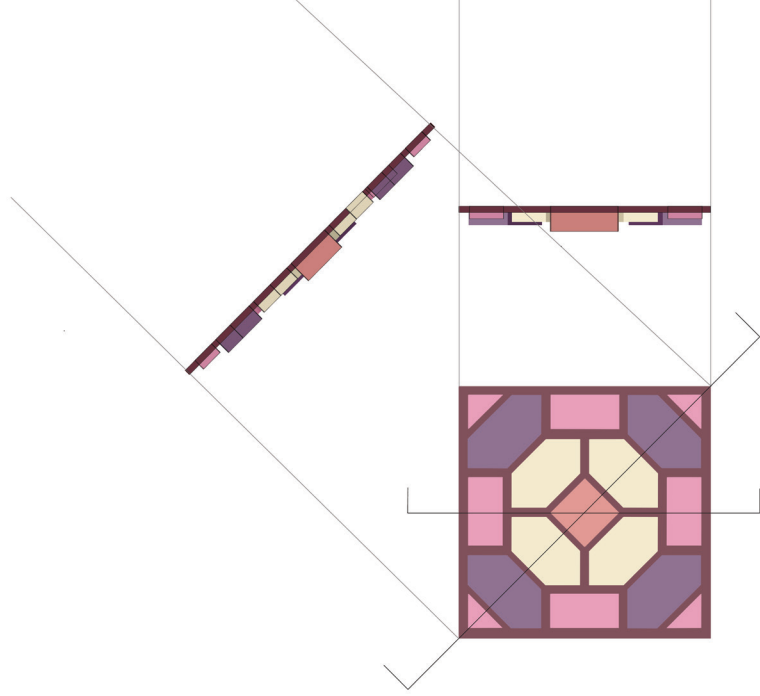
Defne, Eric, Jieqi



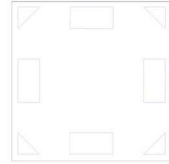
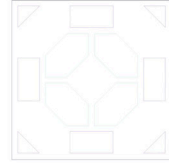
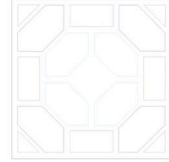
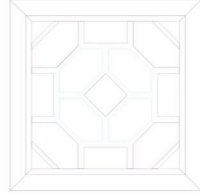
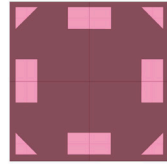
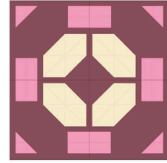
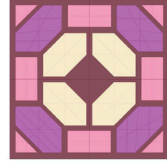
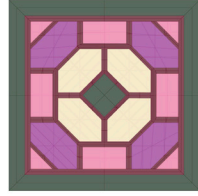
ELEVATION



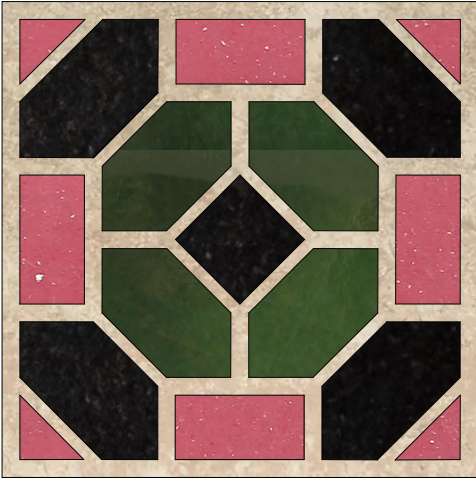
SECTION CUTS



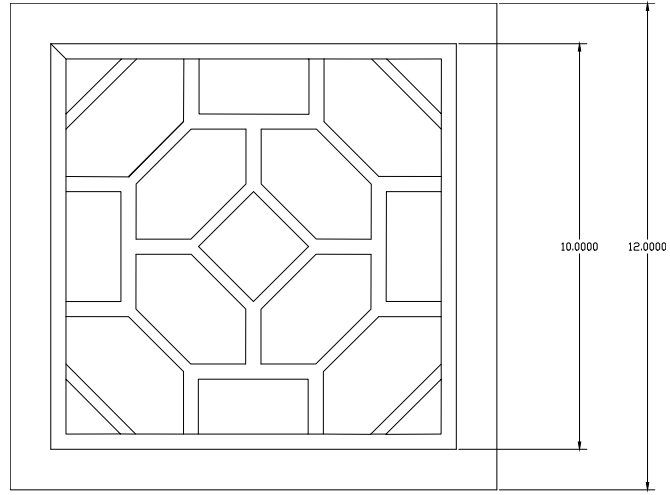
PROCESS



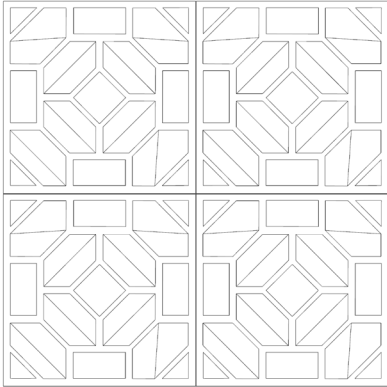
RENDERED PLAN



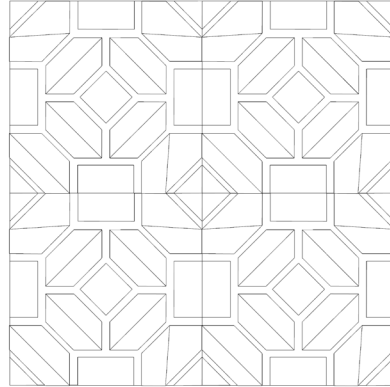
DIMENSIONS ON PLAN



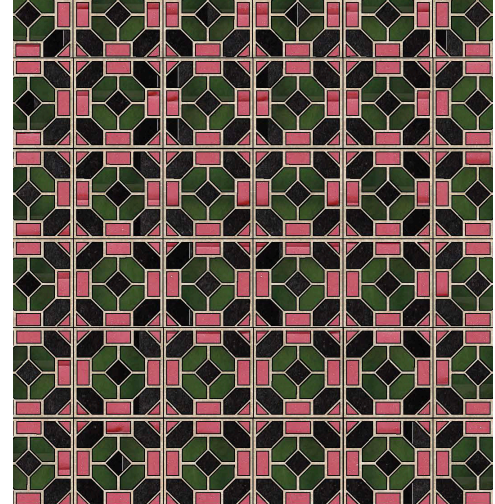
PATTERN



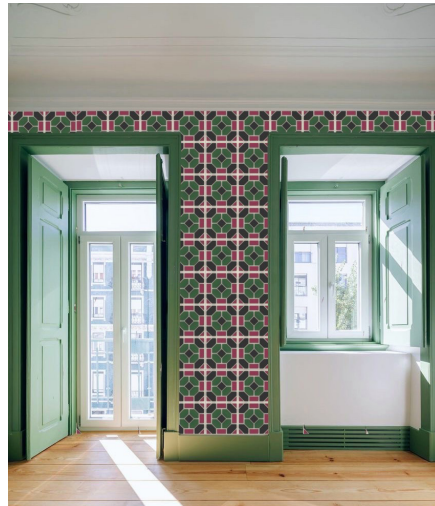
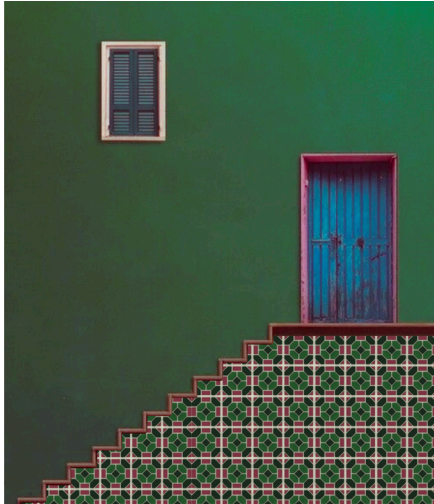
VARIATION 1



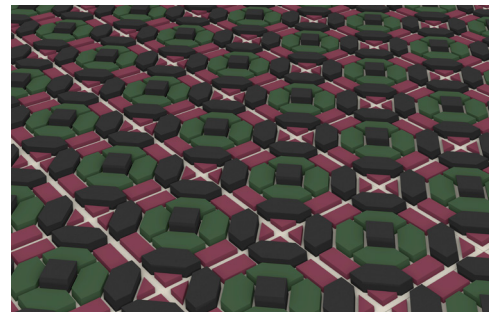
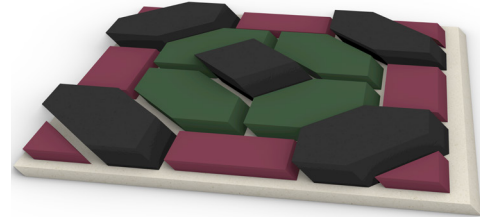
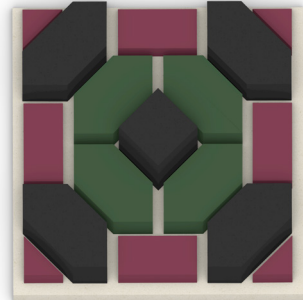
VARIATION 2



RENDERINGS



AXONOMETRIC VIEW

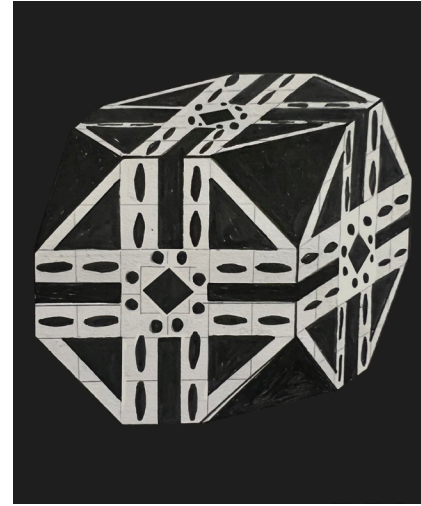
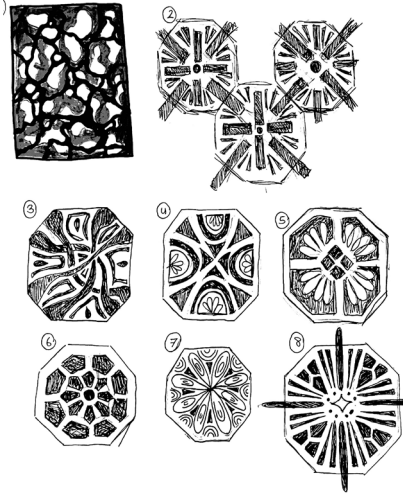


# .02

## LASER CUTTING

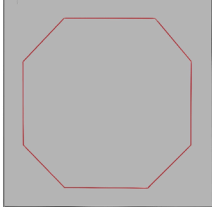
SKIN + BONES

SKETCHES

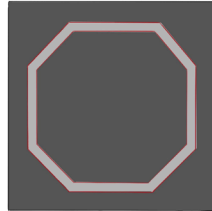
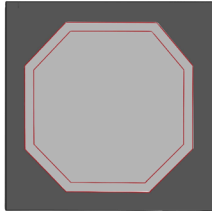


PLANNING

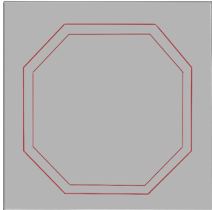
Solid x Fabric Diagram



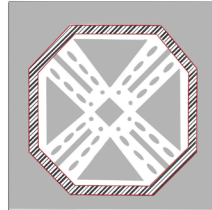
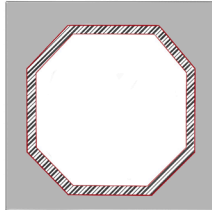
Laser Cut on Solid 6X



Solid Frame 6X

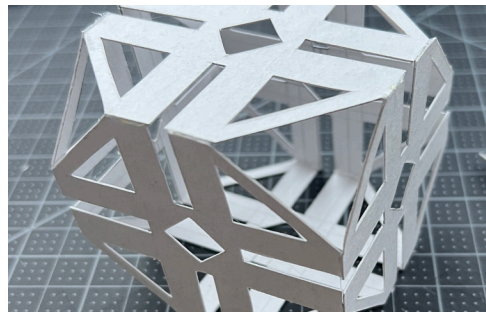
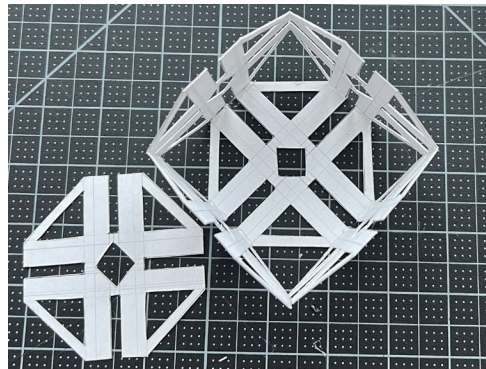
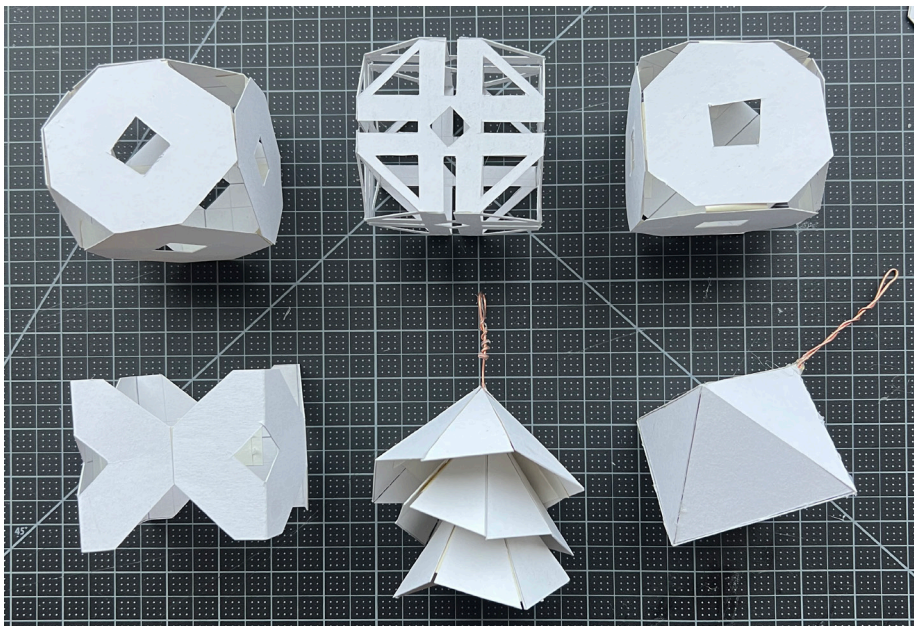
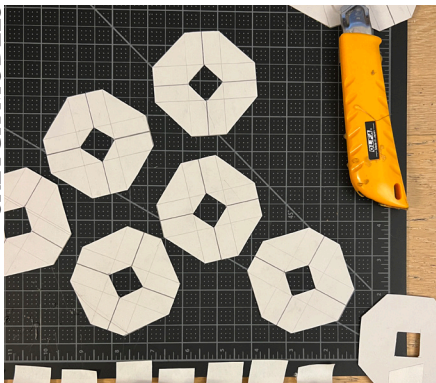


Cut on Fabric 6X

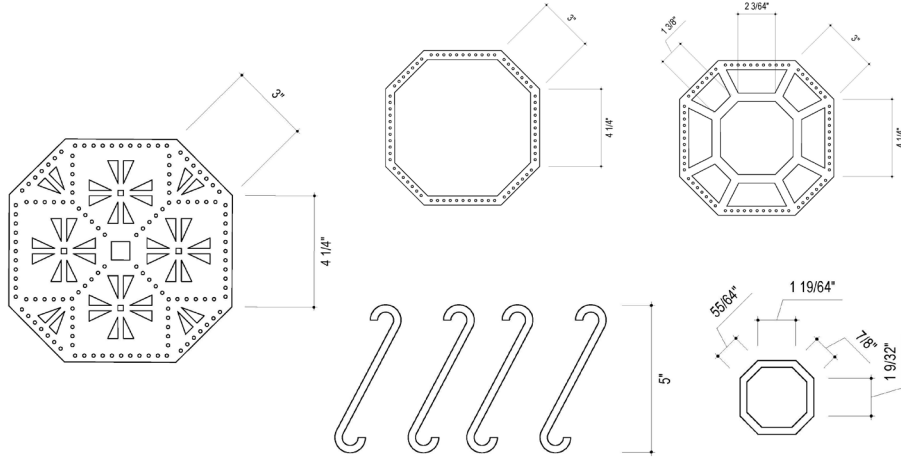


In this laser cutting project I used laser cutting technique to blend a rigid a wood frame with felt, and created a functional yet artistic, both pendant and bedside light fixture design inspired by Leanne Zilka's "floppy logic."

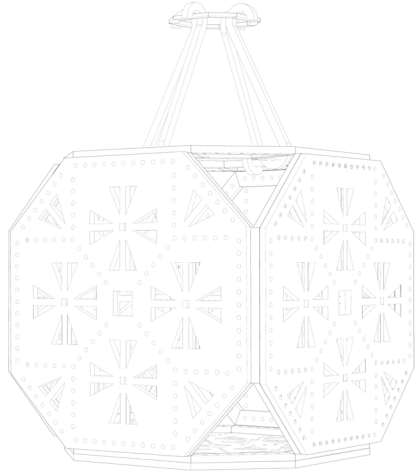
SKETCH MODELS



DIMENSIONS

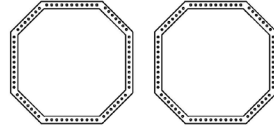


LINEWORK

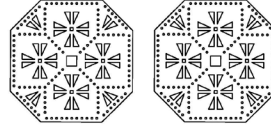


PIECES

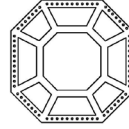
FRAME X5



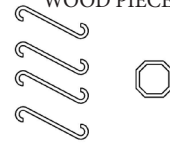
FELT X5



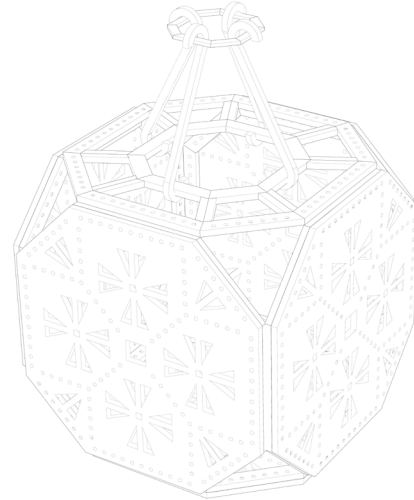
TOP FRAME X1



WOOD PIECES



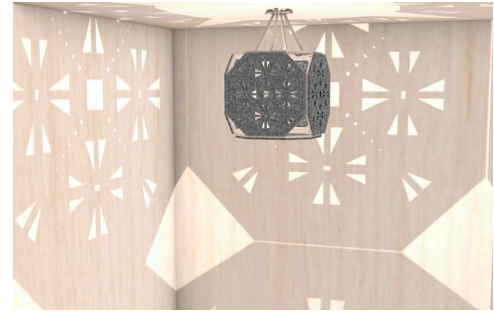
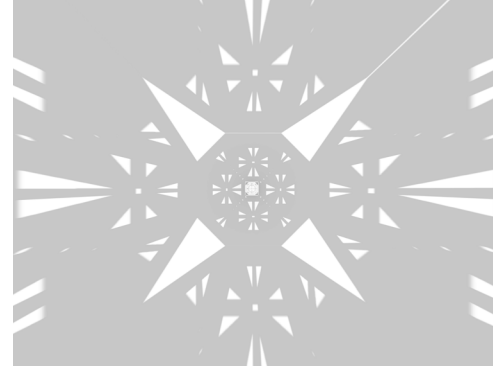
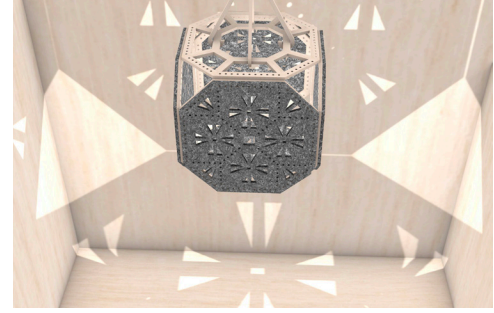
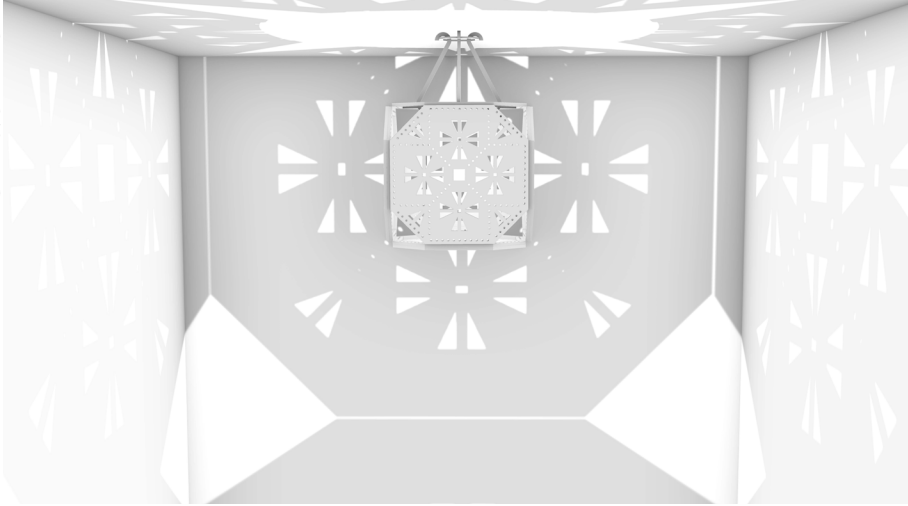
LINEWORK

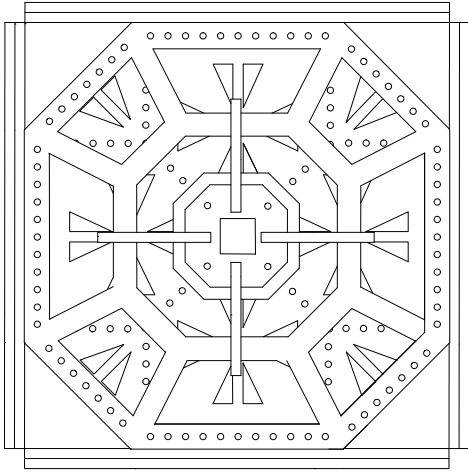


RENDERINGS

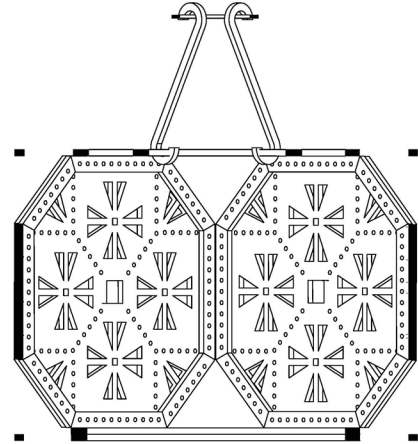
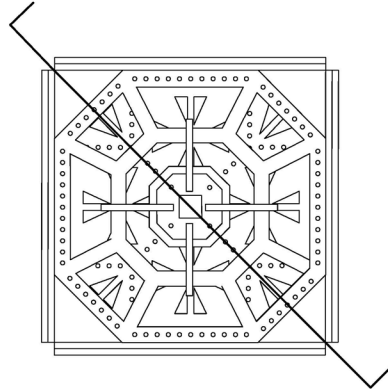


LIGHT & SHADOW

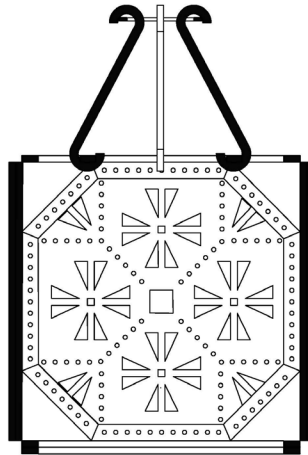
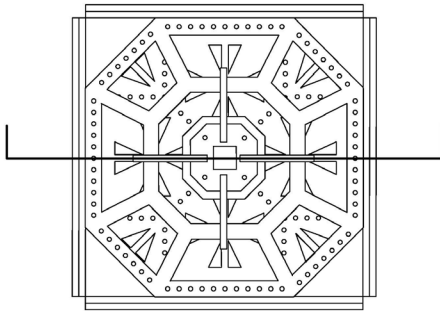




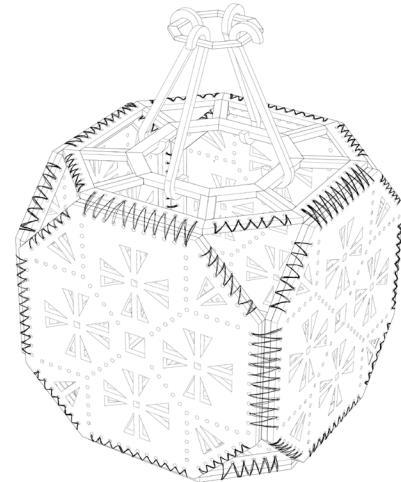
TOP VIEW



SECTION CUT 1

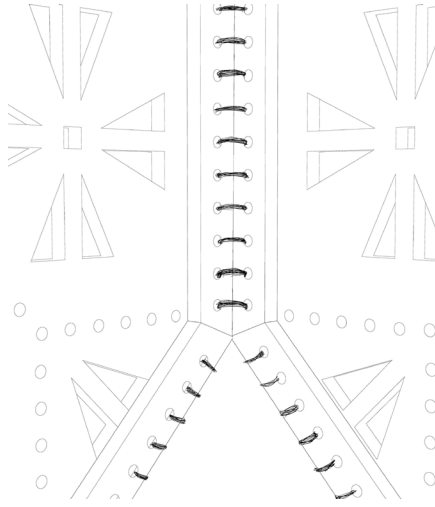
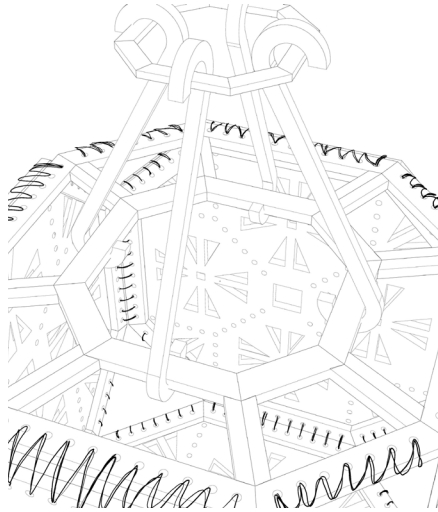
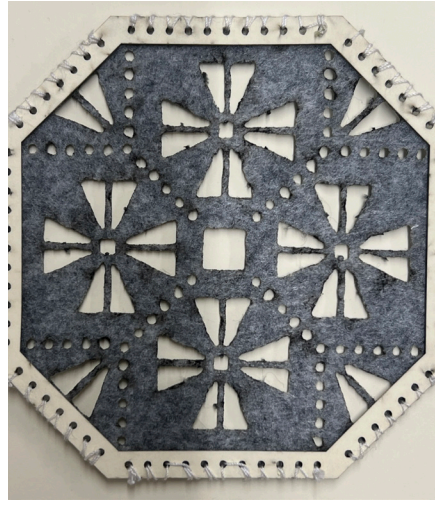
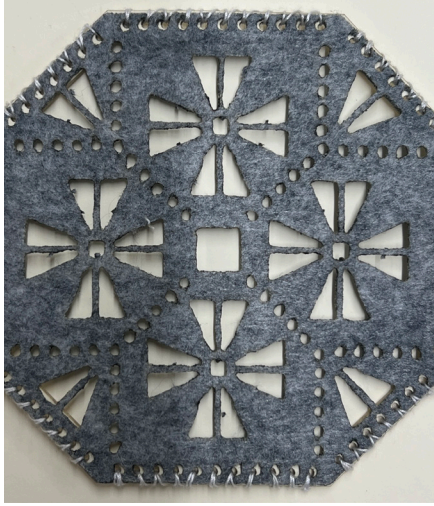


SECTION CUT 2

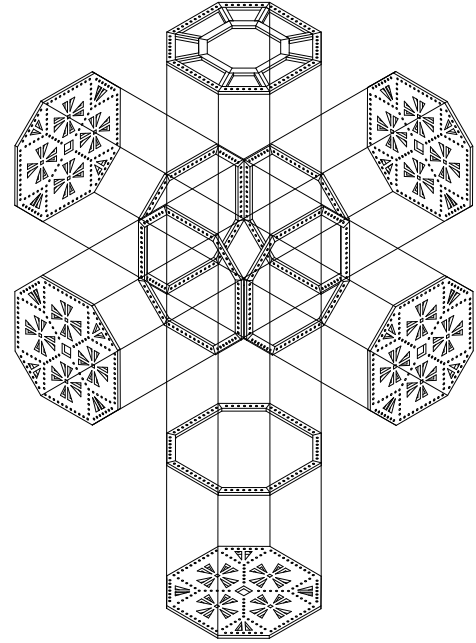


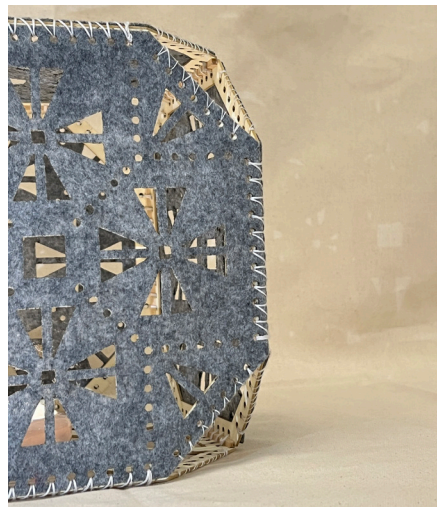
PERSPECTIVE

HALF SCALE MODEL

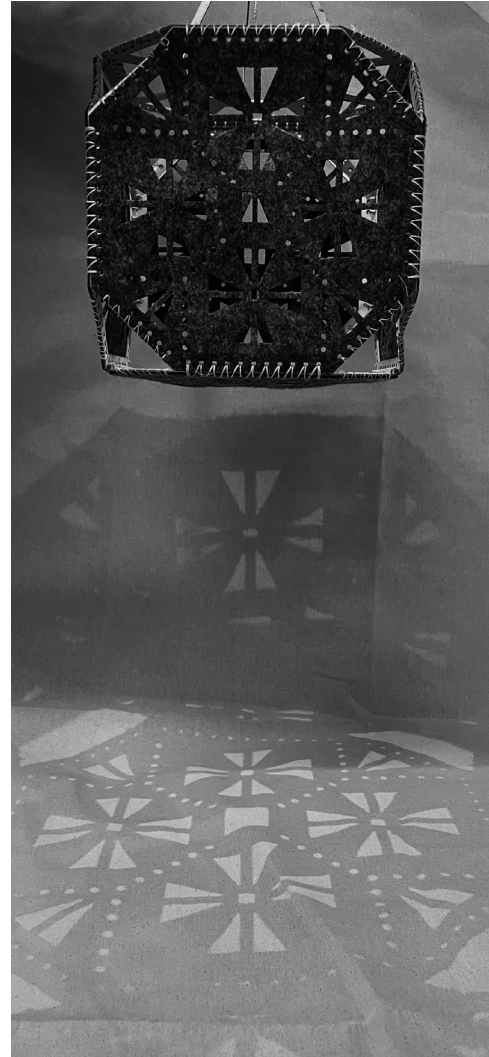
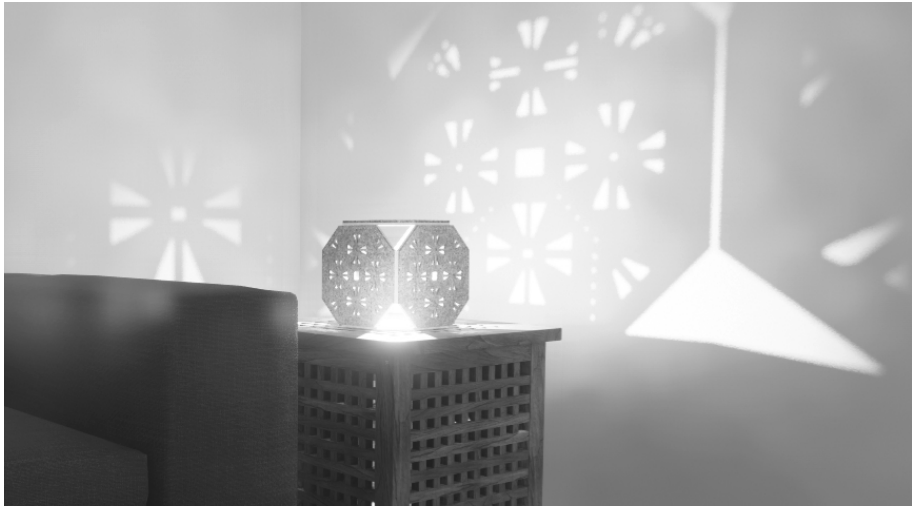
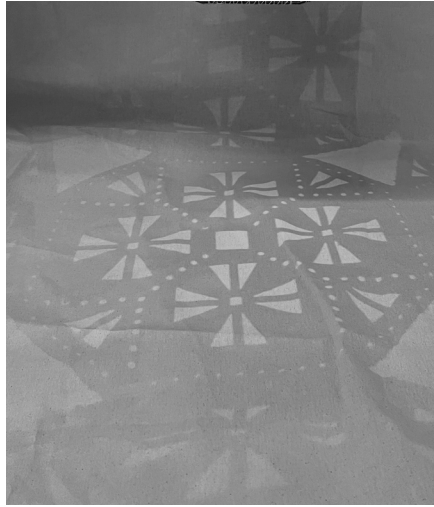
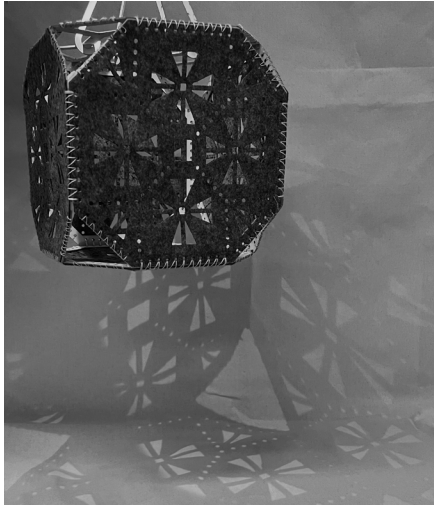


AXONOMETRIC DRAWING





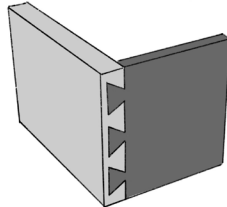
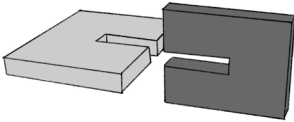
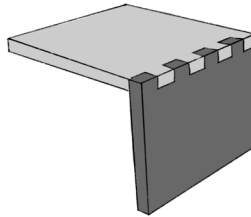
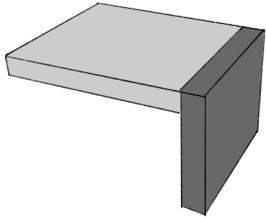
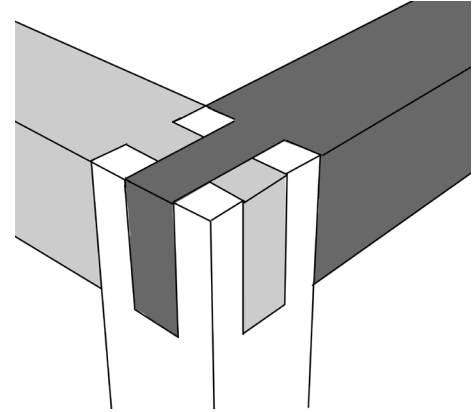
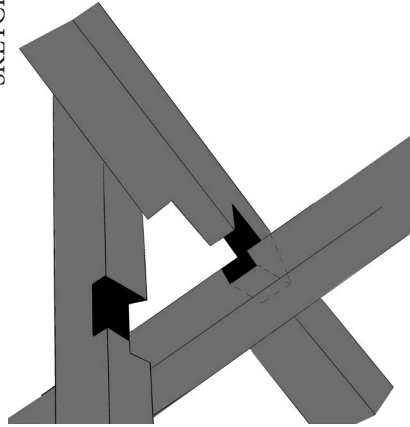
LIGHT & SHADOW



# .03

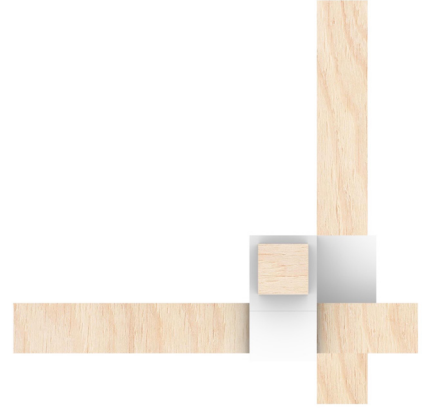
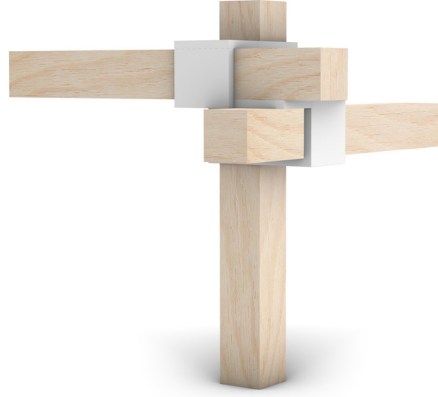
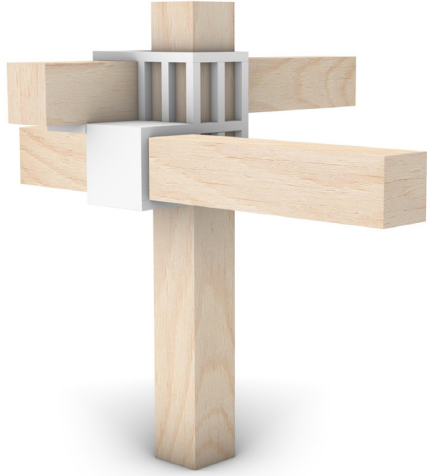
## 3D PRINTING

SKETCHES

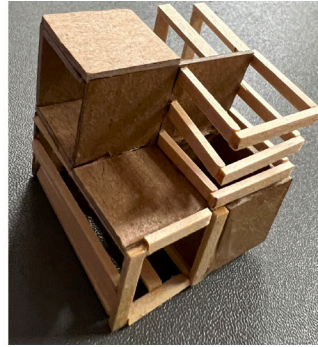
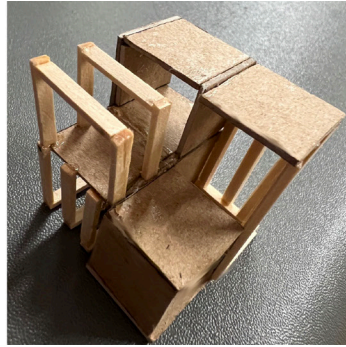


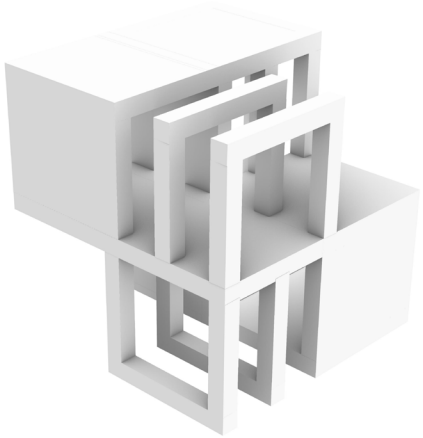
In this assignment I explored joinery techniques to design two tables, one with perpendicular 3D printed joints and another that is angled other than 90 degrees.

FIRST PROTOTYPE

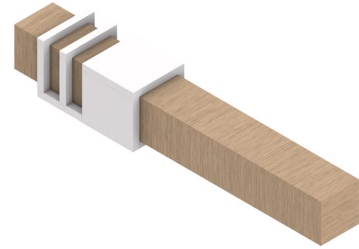
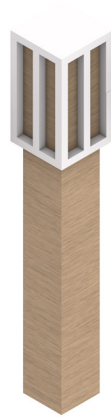
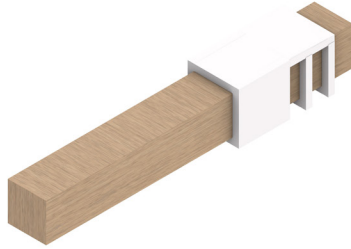
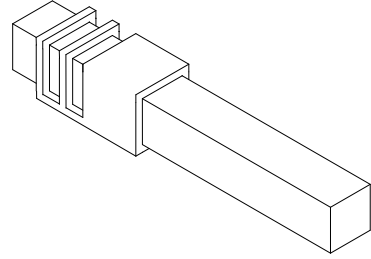
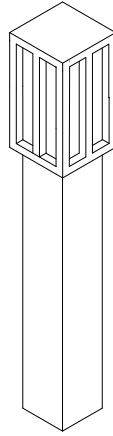
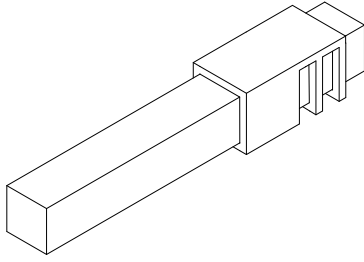


SKETCH MODEL - JOINT 1

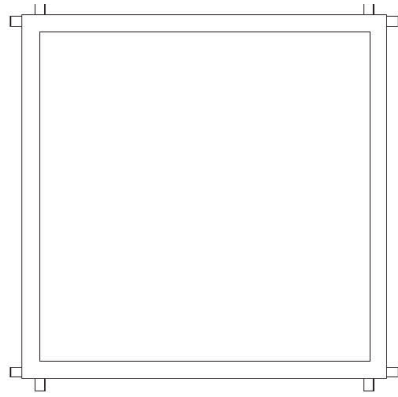




AXONOMETRIC DRAWINGS



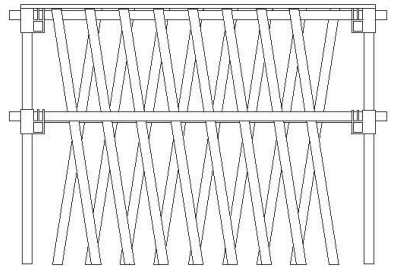
ORTHOGRAPHIC-TABLE DESIGN



PLAN



ELEVATION 1



ELEVATION 2

ORTHOGRAPHIC-JOINT 1



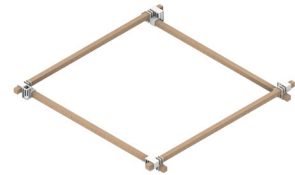
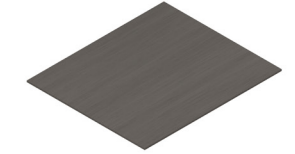
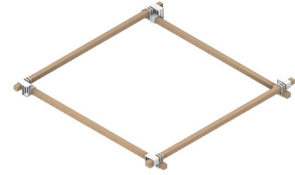
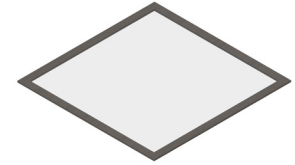
PLAN



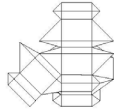
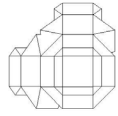
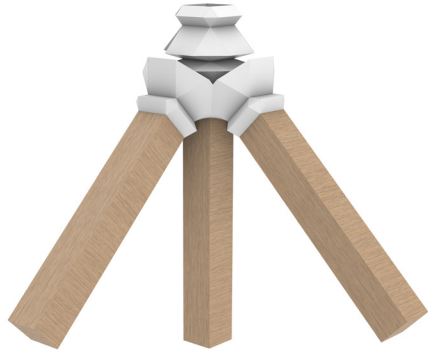
ELEVATIONS



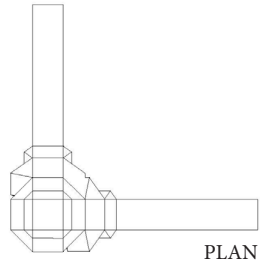
RENDERED TABLE DESIGN- AXONOMETRIC



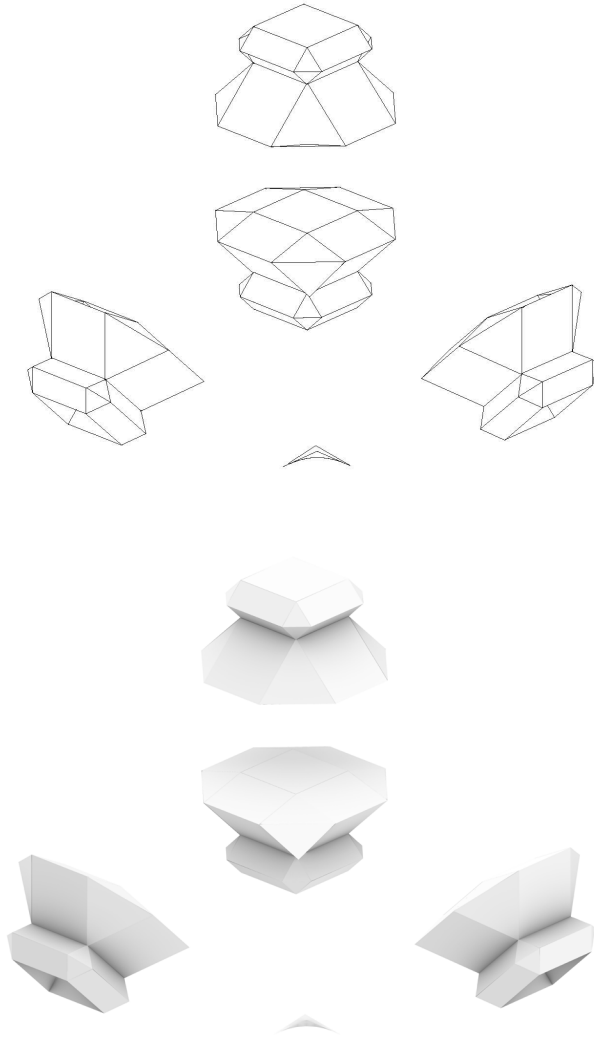
EXPLODED AXONOMETRIC 19



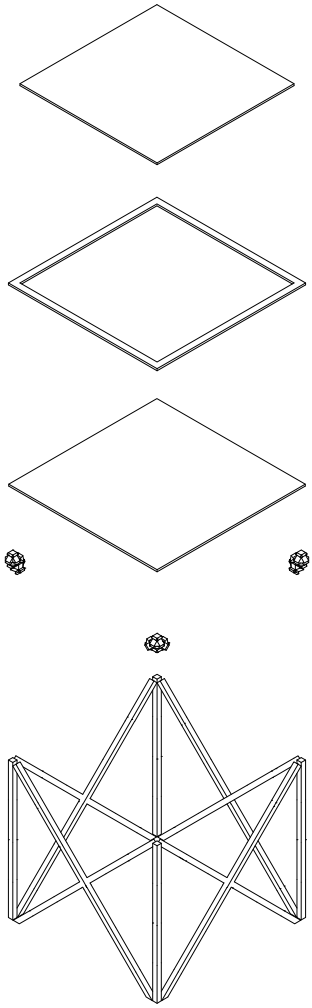
ELEVATIONS



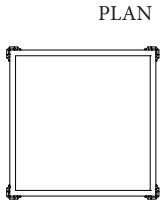
PLAN



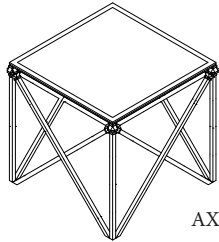
EXPLODED AXONOMETRIC VIEW OF TABLE DESIGN 2



ORTHIOGRAPHIC



PLAN



AXON

ELEVATION

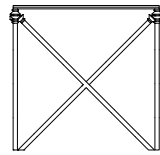


TABLE DESIGN 2 AXONOMETRIC VIEW

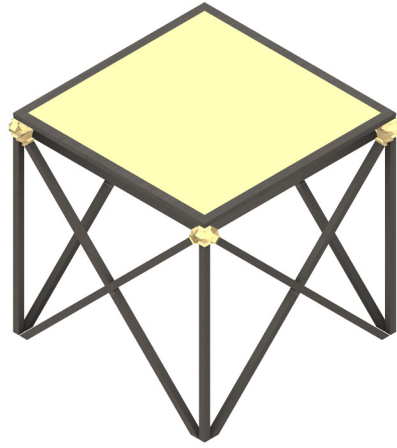
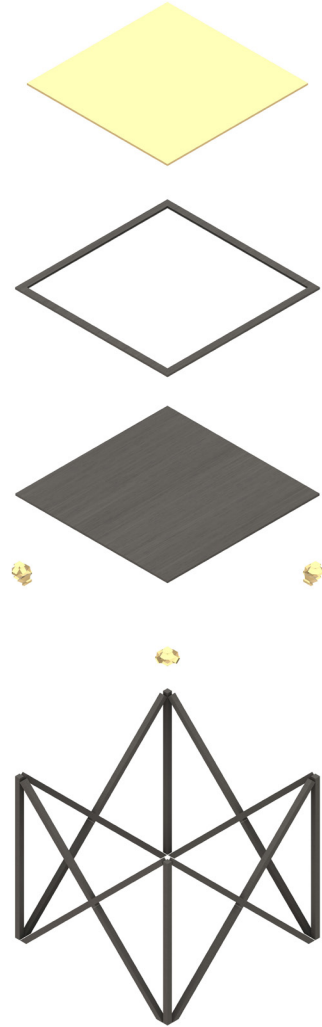
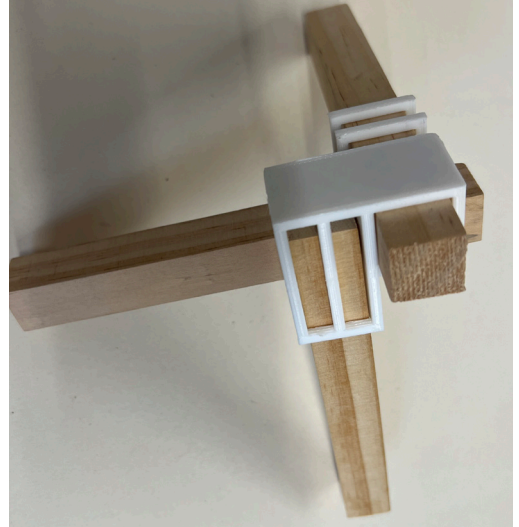
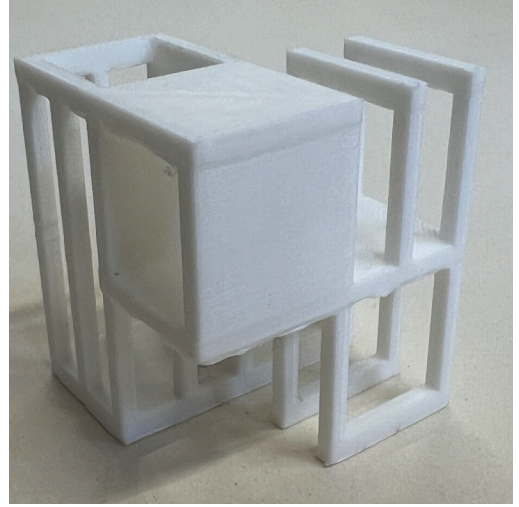
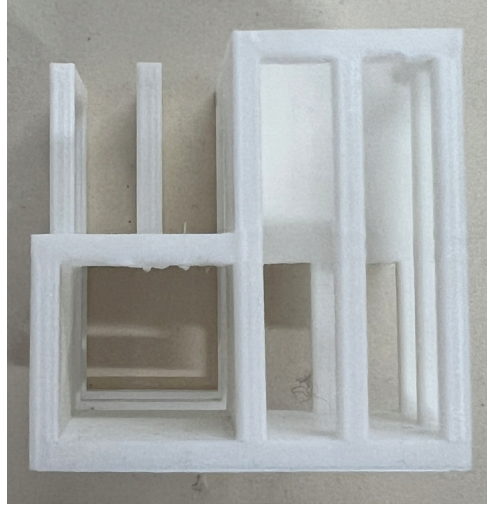
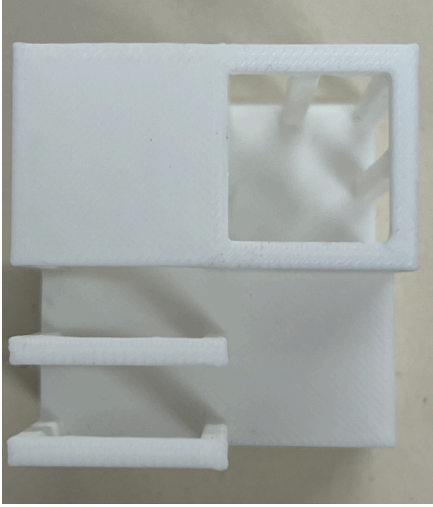
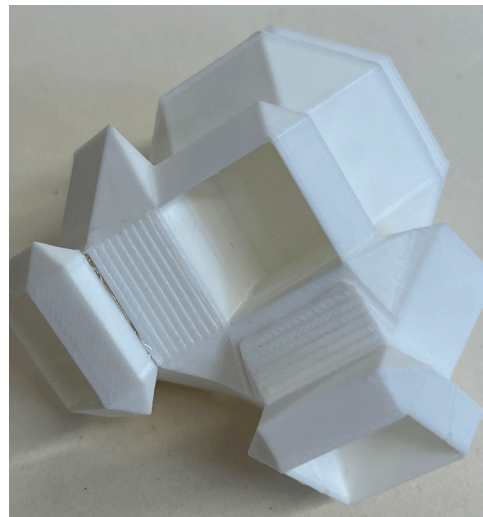
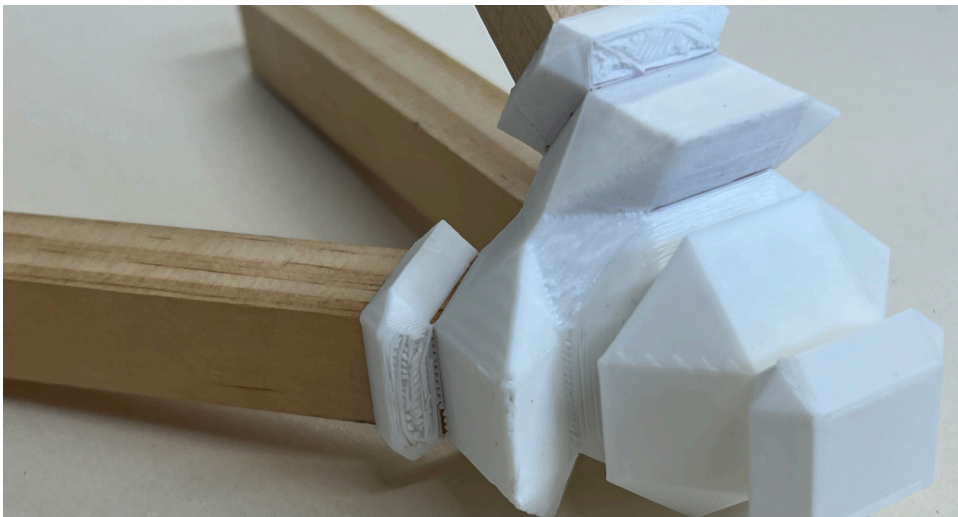
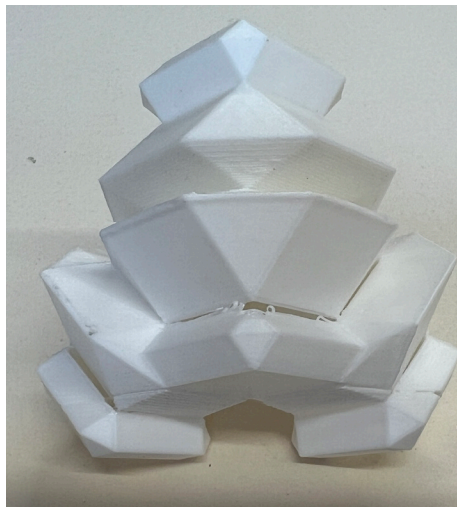
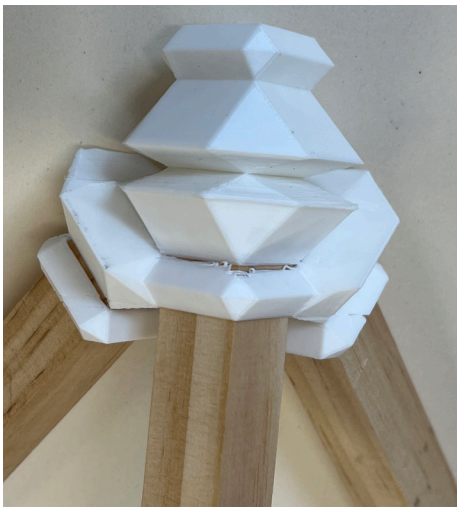


TABLE DESIGN 2 EXPLODED AXONOMETRIC VIEW





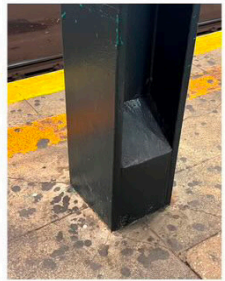
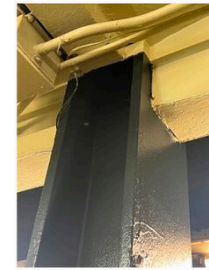
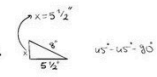
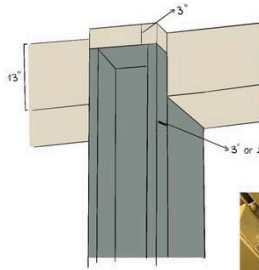
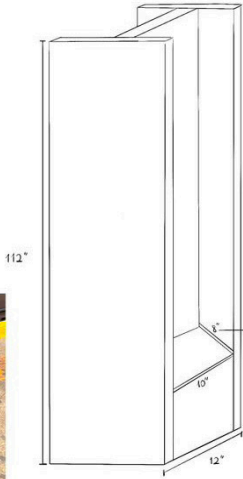
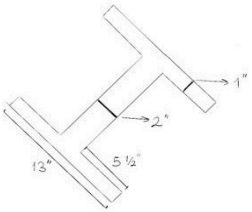


# .04

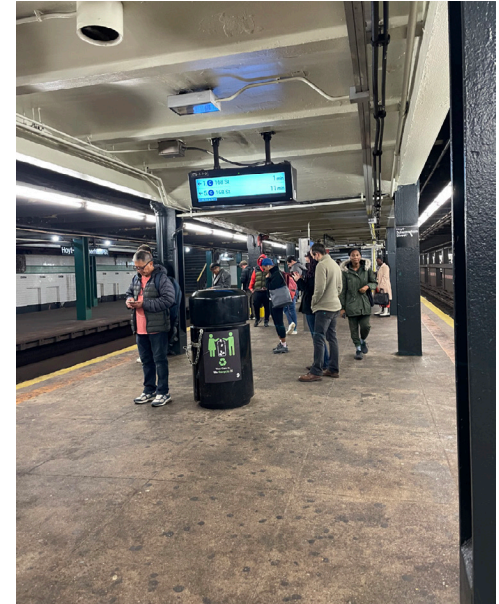
MATERIALS ASSEMBLY  
DEFNE, ERIC, JIEQI



SKETCH - DEFNE



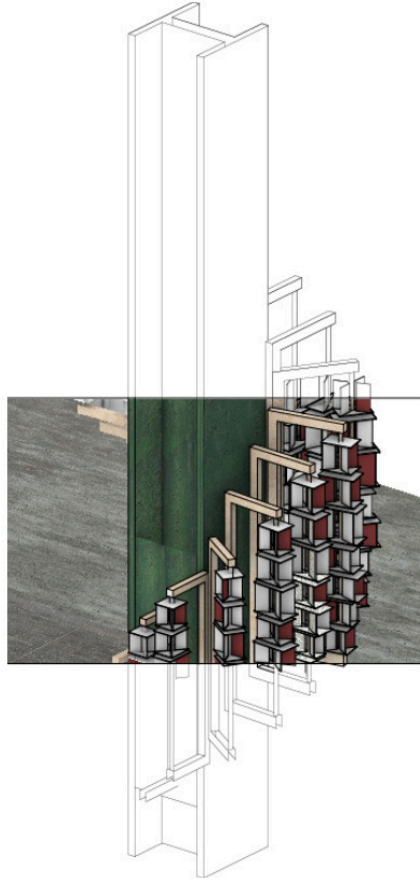
This final project involved collaborative design and fabrication of a subway cladding system for an entertainment purposed column, utilizing at least two different fabrication methods; laser cutting, and 3D Printing.



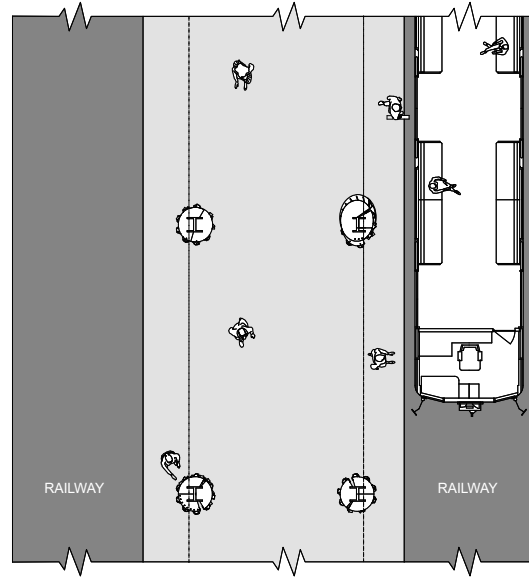
REFLECTION ON THE SITE - JIEQI

Our site observations revealed that people at the station primarily spend their waiting time with heads down, engrossed in their phones, likely due to a lack of engaging activities. The columns at the station are underutilized, with most individuals opting for the more comfortable seating area. This behavior may be influenced by a perceived sense of insecurity standing near the columns, exacerbated by their proximity to the railway. Additionally, people tend to circulate mainly in the center of the station, avoiding the space between the columns and the railway. Notably, the arrival of trains causes significant wind, prompting us to see an opportunity in designing columns that not only interact with the wind but also engage people more effectively, transforming waiting time into a dynamic and enjoyable experience at the station. Our vision is to address comfort, security concerns, and wind impact through an innovative column system that encourages interaction and makes the waiting area more vibrant and engaging for commuters.

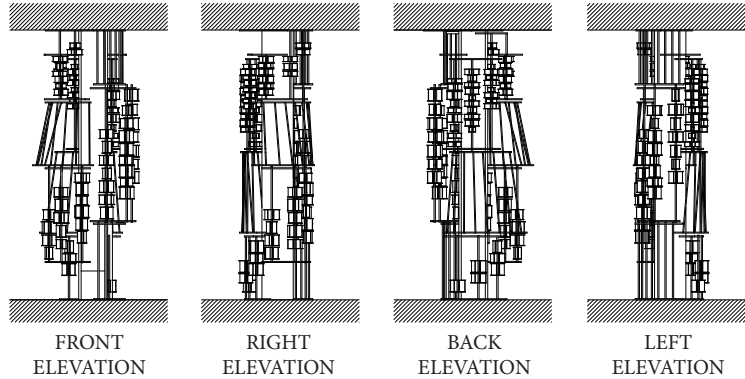
3 FT



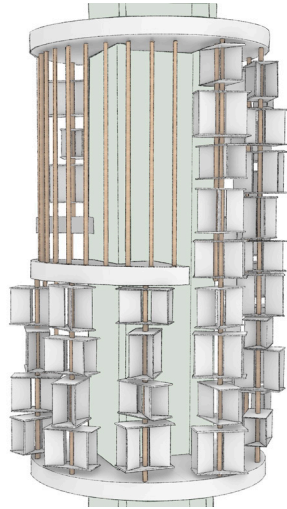
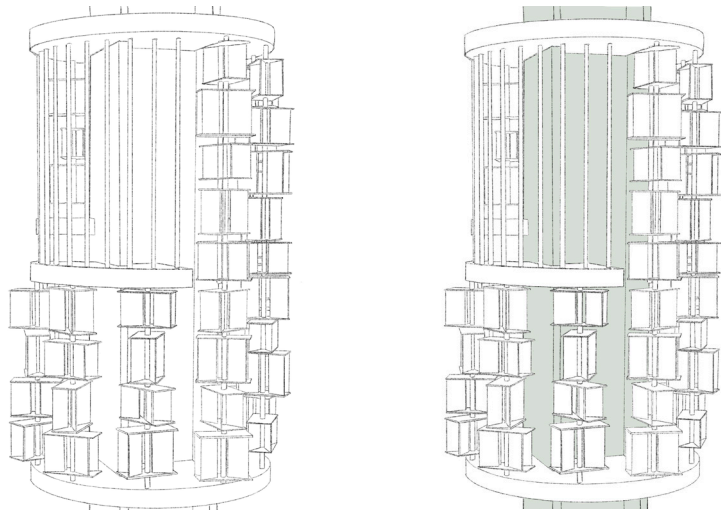
ORTHOGRAPHIC VIEW - DEFNE



PLAN

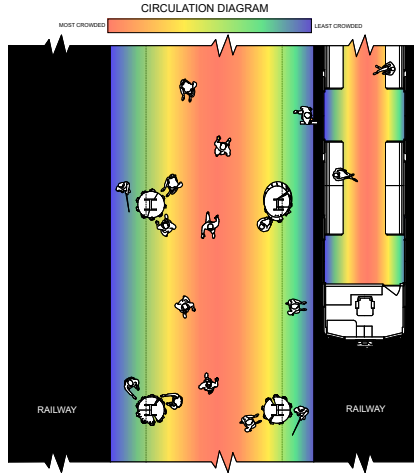


SKETCHES - DEFNE



DESIGN DEVELOPMENT - SECOND ITERATION





DIAGRAMS- SITE SPECIFIC, PSYCHOLOGICAL EFFECT - JIEQI

COLOR OF THE COLUMNS

BLUE: Reference to the color of the A & C train

COLOR OF THE "MUSHROOMS" PLATFORMS

GREEN: Reference to the color of the G train

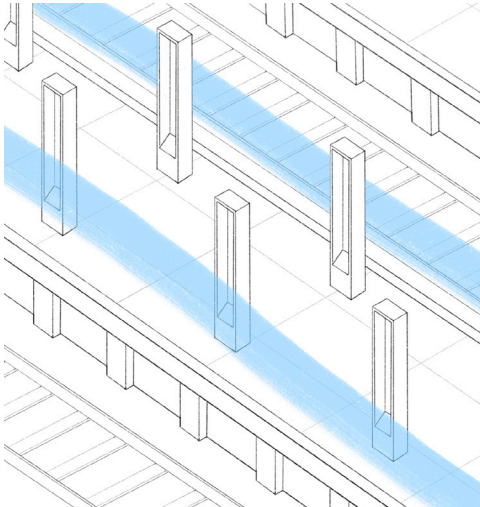
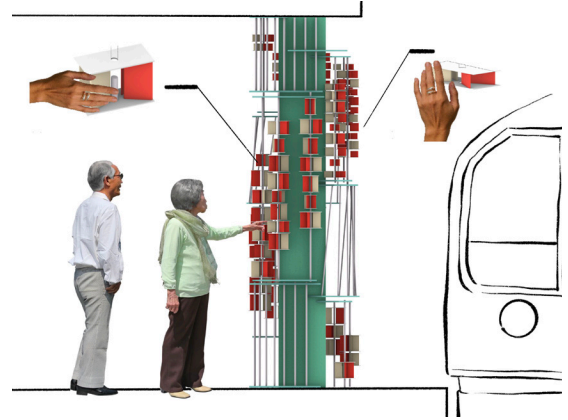
COLOR OF THE PANNELS

RED: Psychological effect, easy noticeable

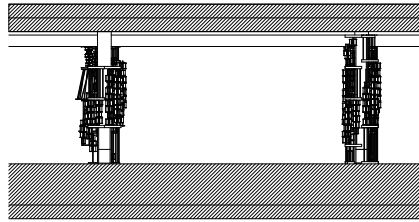
BEIGE AND IVORY: Reference of the colors seen in the site

COLOR CREATED BY THE SPIN

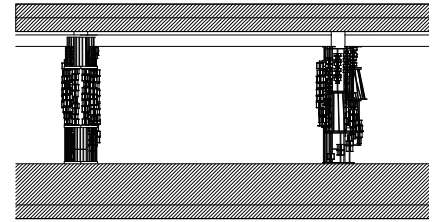
PINK ORANGE: brights up the space, provokes joyful and positive feeling.



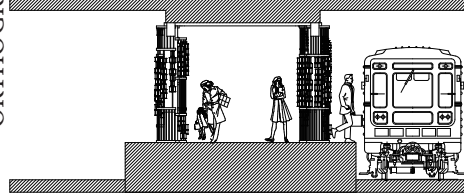
LONGITUDINAL SECTION FACING WEST



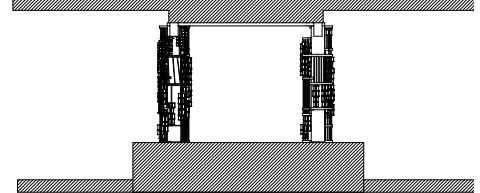
LONGITUDINAL SECTION FACING EAST



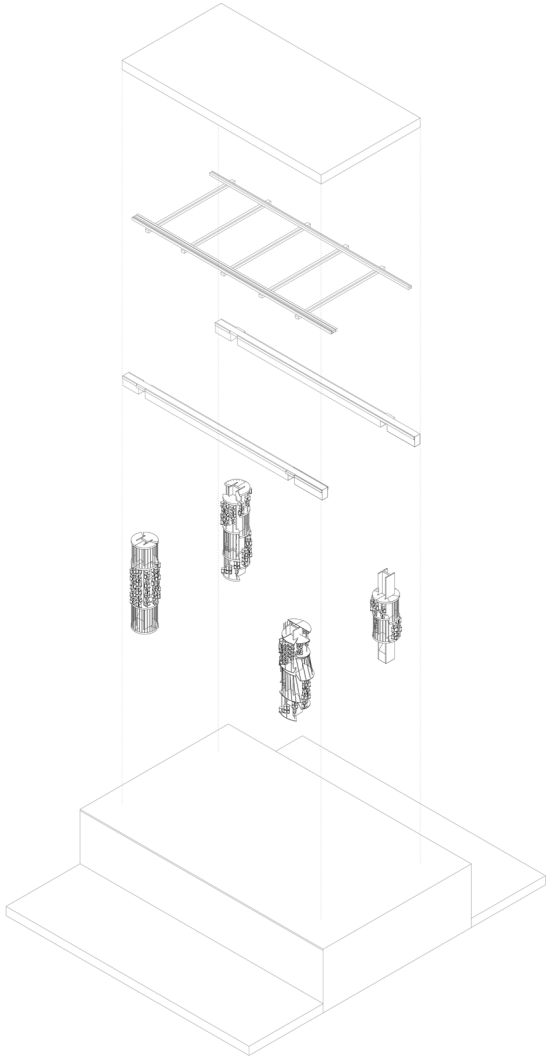
CORSS SECTION FACING NORTH



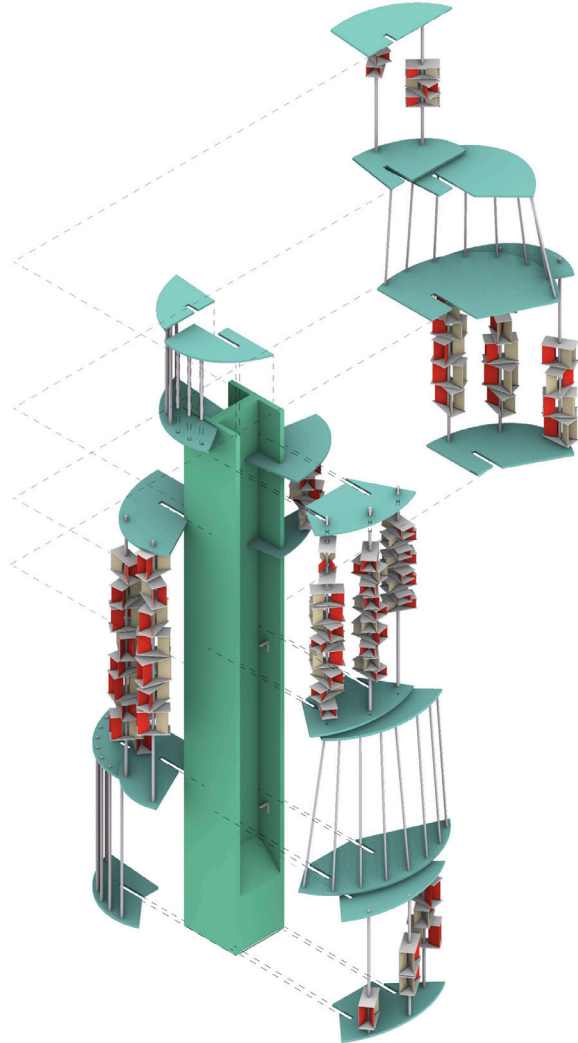
CORSS SECTION FACING SOUTH

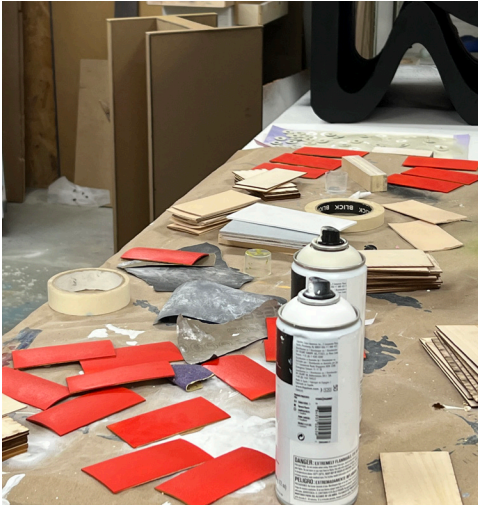


EXPLODED AXONOMETRIC VIEW OF THE SUBWAY STATION - DEFNE

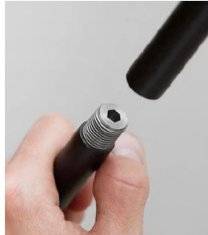
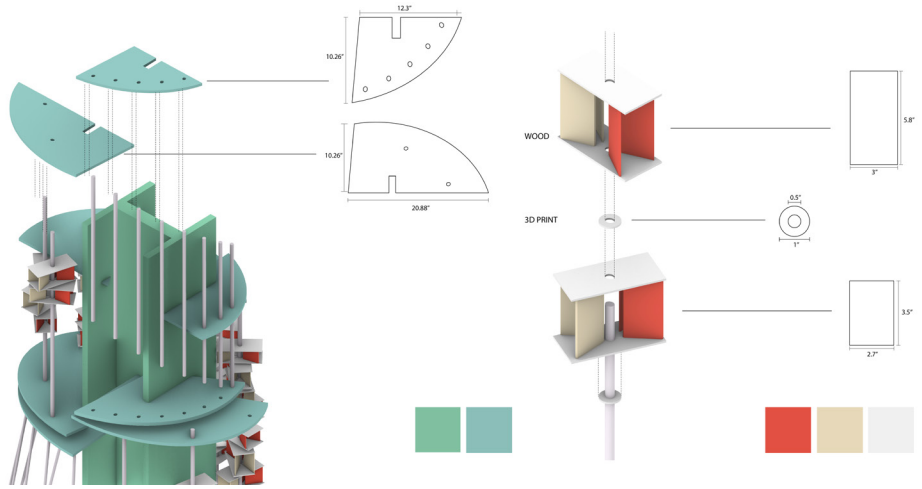


EXPLODED AXONOMETRIC VIEW - JIEQI





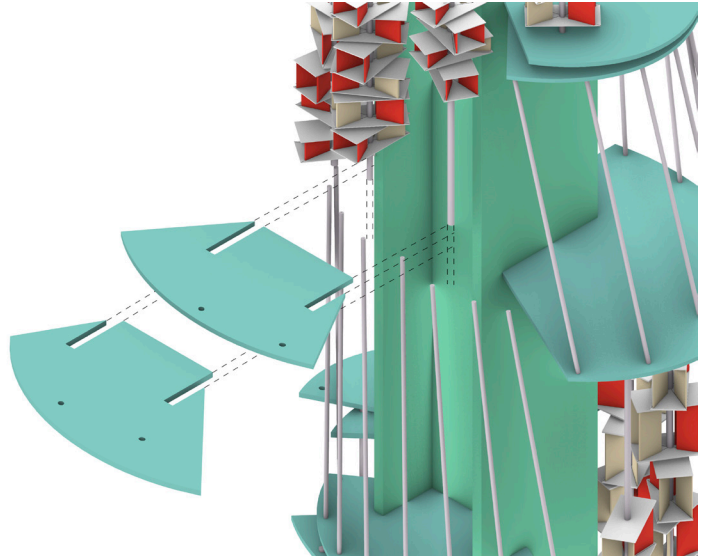
FABRICATION DRAWINGS - ERIC

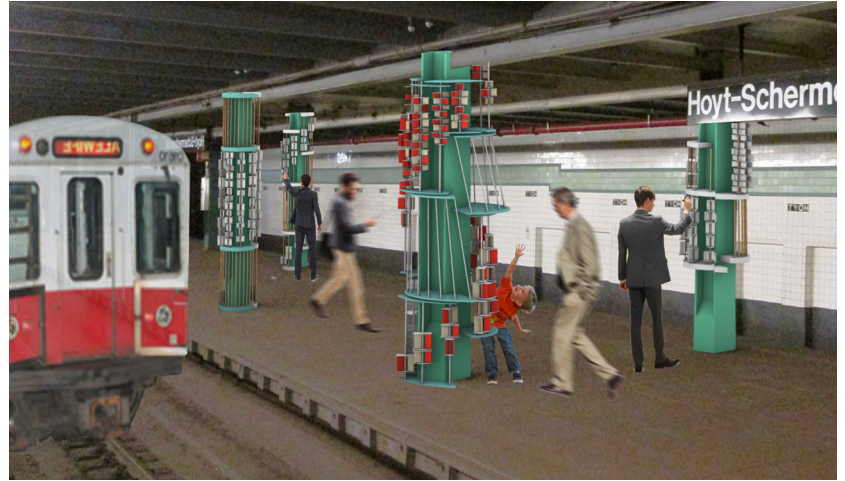


<https://moeb.dk/pages/shelving-system-gallery>



<https://www.ebay.co.uk/itm/203445105638?norover=1&siteid=38kmkvt=1&mkcid=16&chn=psoc>





## FINAL COLUMN DESIGN



DEFNE, JIEQI, ERIC



